



5 Pine Ridge Road  
Medford, MA 02155

Max Dublin Team

Gibson  
**Sotheby's**  
INTERNATIONAL REALTY









## A Classic Brick Tudor with Views of Mystic Lake

This Brooks Estate home sits high on a beautifully landscaped corner lot with seasonal views of Mystic Lake. Built in 1935, this classic brick Tudor counts a half-timbered façade, a pagoda-style copper roof atop the front door and a whimsical bay window as just a few of its architectural flourishes. The surrounding stone walls, brick walkway, bluestone patio and slate roof enhance this residence's exceptional feel. The first floor features a grand living room with a fireplace and a sunroom with lake views. The dining room has wainscoting, elaborate moldings and a French door that leads to a cozy screened-in porch. The eat-in kitchen has honed granite countertops, marble backsplash and stainless steel appliances. The light-filled second floor offers a primary bedroom with an ensuite bathroom and a walk-in closet; two corner bedrooms and an office. The basement includes a gym, playroom and bath. Two-car garage, easy access to shopping and the commuter rail add to this home's special appeal.



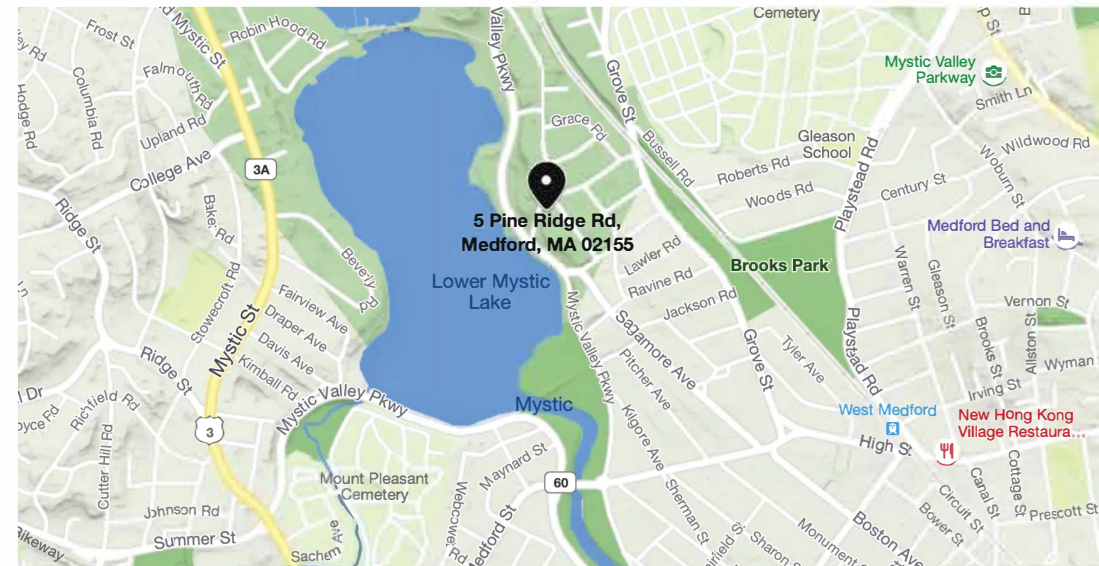
# 5 Pine Ridge Road Medford, MA

OFFERED AT \$1,495,000

[www.5PineRidge.com](http://www.5PineRidge.com)

## Property Details

<b>Beds</b>	3
<b>Baths</b>	3 Full 1 Half
<b>Living</b>	3,499 Sq. Ft.
<b>Lot Size</b>	10,050 Sq. Ft.
<b>Taxes</b>	\$11,667
<b>Parking</b>	2 Car Garage, Plus 4 Off-Street Spaces
<b>Outdoor</b>	Screened Porch, Patio, Garden
<b>Year Built</b>	1935
<b>Roof</b>	Slate
<b>Siding</b>	Brick
<b>Heating</b>	Hot Water Radiators
<b>Cooling</b>	Central



### Max Dublin

Exclusive Listing Agent

617.230.7615

[Max.Dublin@GibsonSIR.com](mailto:Max.Dublin@GibsonSIR.com)

[WWW.MAXDUBLIN.COM](http://WWW.MAXDUBLIN.COM)

Gibson Sotheby's International Realty  
1008 Massachusetts Avenue  
Cambridge, MA 02138

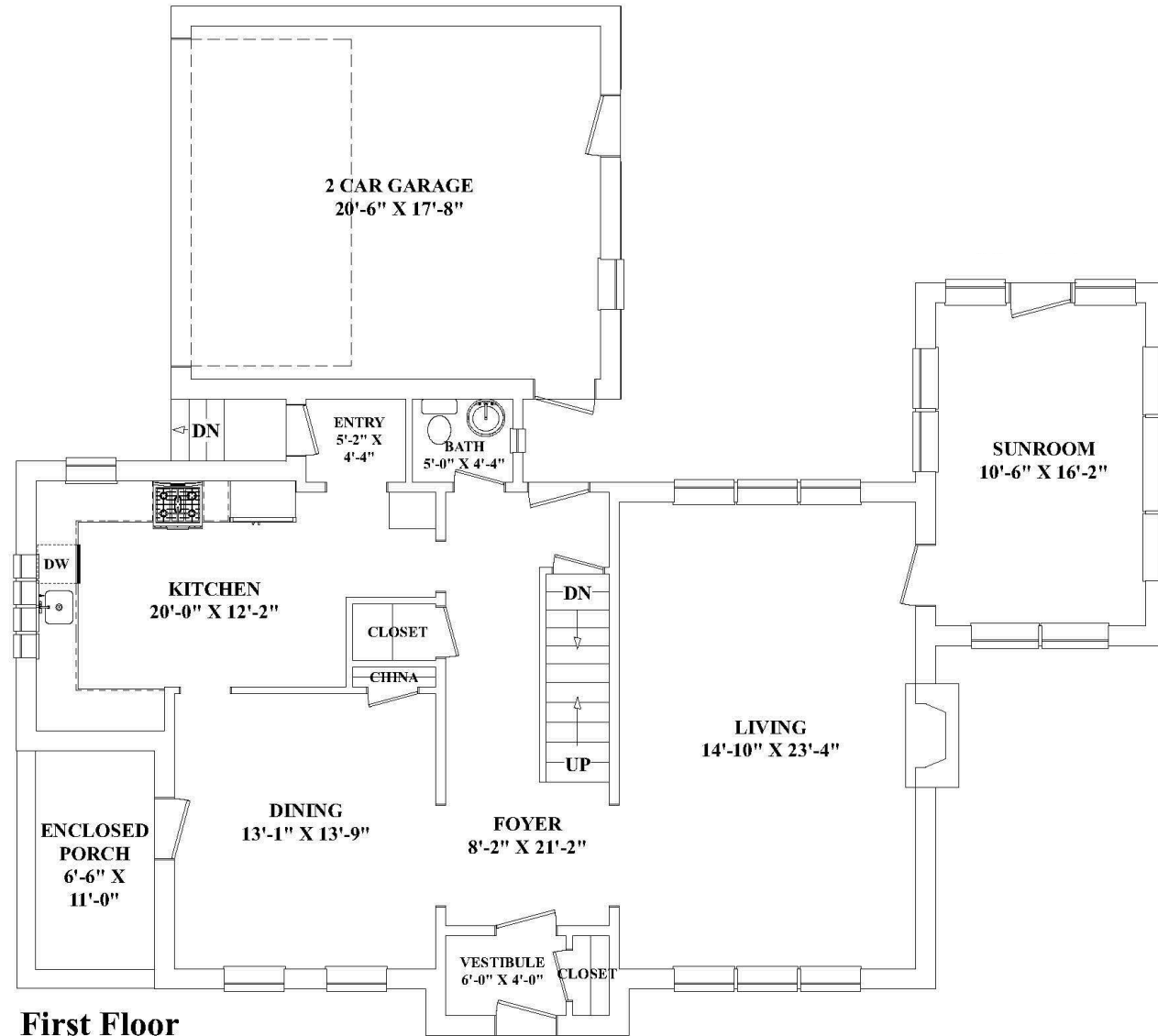
Max Dublin Team

Gibson  
**Sotheby's**  
INTERNATIONAL REALTY

Sotheby's International Realty® and the Sotheby's International Realty Logo are service marks licensed to Sotheby's International Realty Affiliates LLC and used with permission. Gibson Sotheby's International Realty fully supports the principles of the Fair Housing Act and the Equal Opportunity Act. Each office is independently owned and operated. Any services or products provided by independently owned and operated franchisees are not provided by, affiliated with or related to Sotheby's International Realty Affiliates LLC nor any of its affiliated companies. If your property is listed with a real estate broker, please disregard. It is not our intention to solicit the offerings of other real estate brokers.



# 5 Pine Ridge Road



**First Floor**

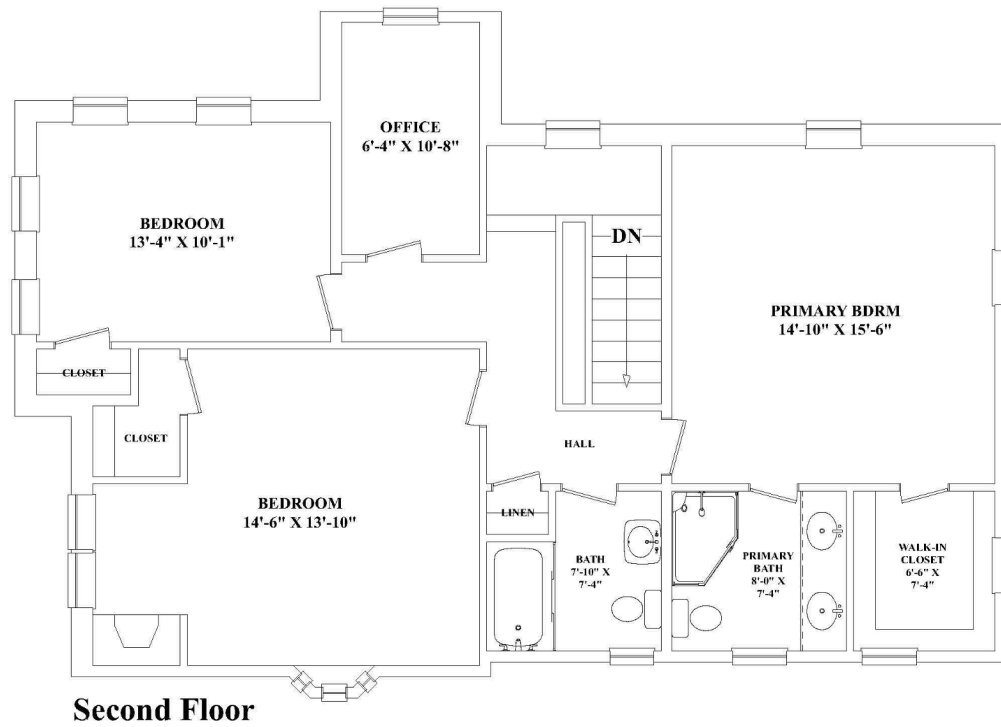
Max Dublin Team

Gibson  
**Sotheby's**  
INTERNATIONAL REALTY



# 5 Pine Ridge Road

---



---

Max Dublin Team

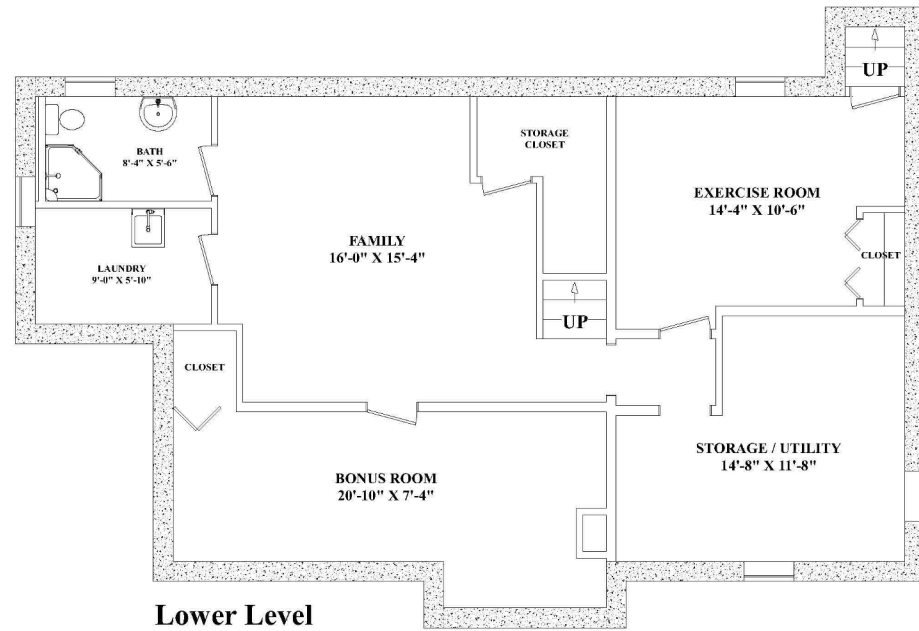
Gibson  
**Sotheby's**  
INTERNATIONAL REALTY

---



# 5 Pine Ridge Road

---



---

Max Dublin Team

Gibson  
**Sotheby's**  
INTERNATIONAL REALTY

---