



3 Yerxa Road, Unit 2
Cambridge, MA 02140

Max Dublin Team

Gibson
Sotheby's
INTERNATIONAL REALTY





Bright & Airy North Cambridge Condo

This bright and airy two bedroom condominium is located in the lovely North Cambridge locale. Situated on the second floor of a three-family home, this sun-filled unit offers a wonderful flow with an open floor plan and classic details like beautiful hardwood floors, bay window in the living room and wonderful built-in bookcase in the dining room. The kitchen features maple cabinets, a breakfast bar and a pantry area with additional cabinets and counter space. Split by the main hallway, the unit offers a private side with the bedrooms and the updated full bath features bead board and a tile floor, plus an additional sunny room perfect for an office. Bonus features include a private back porch overlooking the shared back yard and large private storage area in the basement. Located in a great neighborhood near the Peabody school, Cambridge public library, multiple playgrounds and parks and roughly half mile to Davis and Porter Square with easy access to Alewife and Route 2.

3 Yerxa Road, Unit 2 Cambridge, MA

OFFERED AT \$725,000

www.3Yerxa.com

Property Details

Condo Fee	\$225
Fee Includes	Water;Sewer;Master Insurance;Laundry Facilities;Reserve Funds
Beds	2
Baths	1
Living	1,083 Sq. Ft.
Taxes (without exempt)	\$4,203
Taxes (with exempt)	\$1,502
Parking	On Street Permit
Outdoor	Common Yard
Year Built / Converted	1910 / 1998
Roof	Rubber (2020)
Siding	Shingles
Heating	Steam, Gas
Hot Water	Natural Gas



Max Dublin

Exclusive Listing Agent

617.230.7615

Max.Dublin@GibsonSIR.com

MAXDUBLIN.COM

Gibson Sotheby's International Realty
1008 Massachusetts Avenue
Cambridge, MA 02138

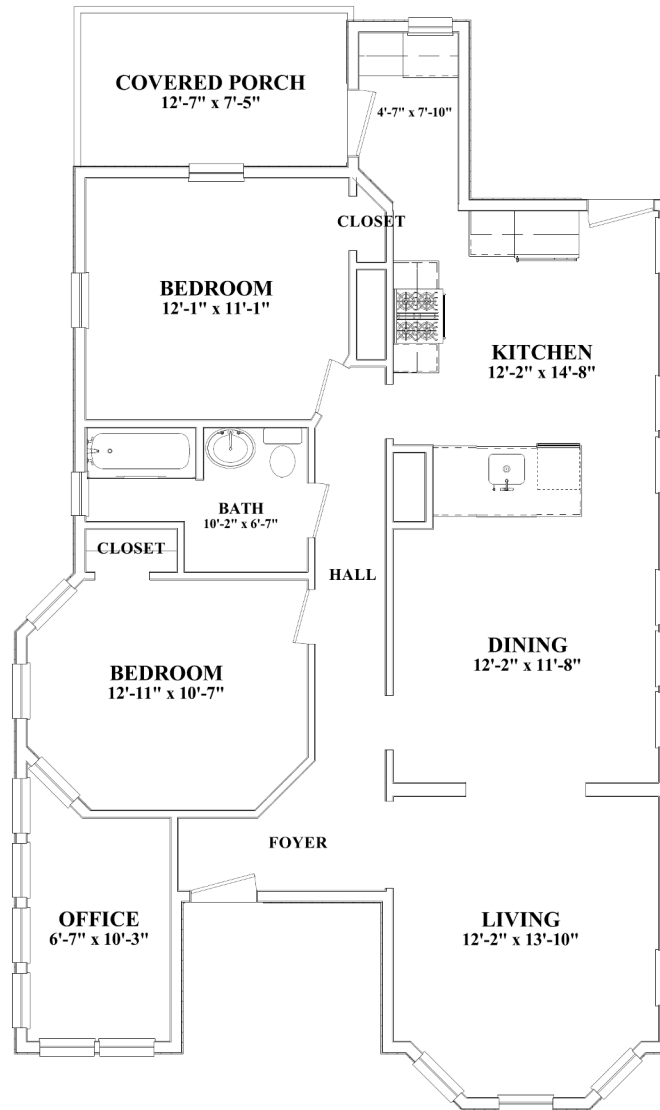
Cooperating Broker Compensation is for MLS members only

Sotheby's International Realty® and the Sotheby's International Realty Logo are service marks licensed to Sotheby's International Realty Affiliates LLC and used with permission. Gibson Sotheby's International Realty fully supports the principles of the Fair Housing Act and the Equal Opportunity Act. Each office is independently owned and operated. Any services or products provided by independently owned and operated franchisees are not provided by, affiliated with or related to Sotheby's International Realty Affiliates LLC nor any of its affiliated companies. If your property is listed with a real estate broker, please disregard. It is not our intention to solicit the offerings of other real estate brokers.

Max Dublin Team

Gibson
Sotheby's
INTERNATIONAL REALTY

3 Yerxa Road, Unit 2



Max Dublin Team

Gibson
Sotheby's
INTERNATIONAL REALTY