



345 Harvard Street, Unit G2
Cambridge, MA 02138

Max Dublin Team

Gibson
Sotheby's
INTERNATIONAL REALTY





Centrally Located One-Bedroom in Cambridge

Centrally located, with effortless access to both Harvard Square and Central Square, and a quarter mile from Cambridge Public Library, this one-bedroom condominium unit at 345 Harvard Avenue is ideal. Located on the ground floor with its own private outdoor entrance, the unit enjoys the benefits of a larger professional managed building but the autonomy of being on its own. There is an open living/dining plan with newer floors, large bedroom, and updated kitchen. Sought after perks include parking, storage and conveniently positioned laundry room near the unit. Currently rented (through June 2022) this would be great for an investor, first time buyer, or a pied a terre.

345 Harvard Street, Unit G2 Cambridge, MA

OFFERED AT \$525,000
www.345Harvard.com

Property Details

Condo Fee	\$276
Fee Includes	Heat;Hot Water;Water;Sewer;Master Insurance;Laundry Facilities;Elevator;Exterior Maintenance;Landscaping;Snow Removal
Beds	1
Baths	1
Living	540 Sq. Ft.
Taxes	\$2,935
Parking	Assigned parking space "Y"
Year Built/Converted	1964/2007
Roof	Rubber
Siding	Brick
Cooling	Wall Air Conditioning
Heating	Hot Water Baseboard (included in the condo fee)



Max Dublin
Exclusive Listing Agent
617.230.7615
Max.Dublin@GibsonSIR.com
MAXDUBLIN.COM

Gibson Sotheby's International Realty
1008 Massachusetts Avenue
Cambridge, MA 02138

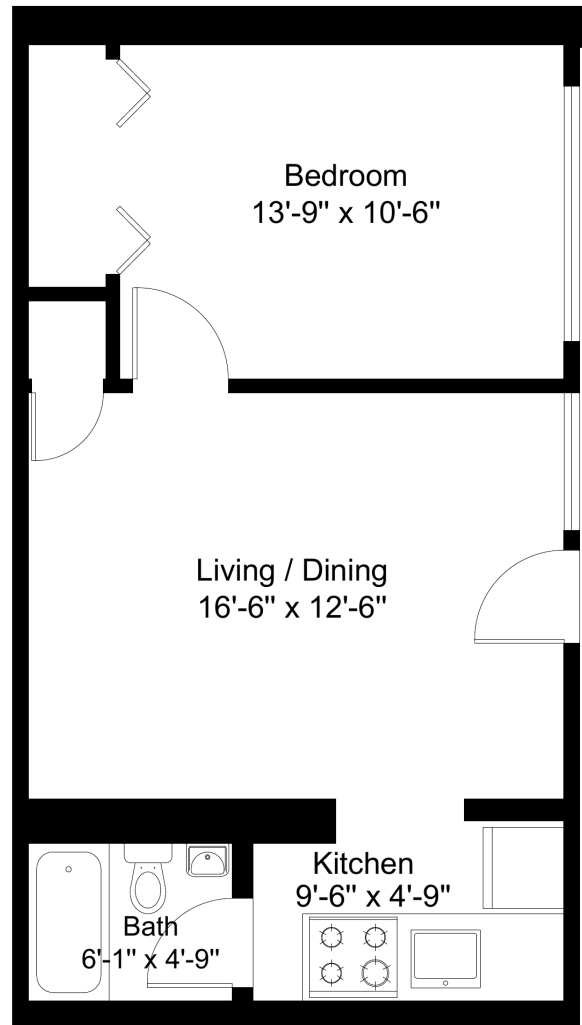
Cooperating Broker Compensation is for MLS members only

Sotheby's International Realty® and the Sotheby's International Realty Logo are service marks licensed to Sotheby's International Realty Affiliates LLC and used with permission. Gibson Sotheby's International Realty fully supports the principles of the Fair Housing Act and the Equal Opportunity Act. Each office is independently owned and operated. Any services or products provided by independently owned and operated franchisees are not provided by, affiliated with or related to Sotheby's International Realty Affiliates LLC nor any of its affiliated companies. If your property is listed with a real estate broker, please disregard. It is not our intention to solicit the offerings of other real estate brokers.

Max Dublin Team

Gibson
Sotheby's
INTERNATIONAL REALTY

345 Harvard Street, Unit G2



Max Dublin Team

Gibson
Sotheby's
INTERNATIONAL REALTY
