



319 Washington Street
Cambridge, MA 02139

Max Dublin Team

Gibson
Sotheby's
INTERNATIONAL REALTY





Cambridge Single Family with Endless Possibilities

This 1,814 square foot single family home with four off-street parking spots in the much sought-after Central square neighborhood has endless possibilities. A welcoming front facade with wrought iron fence that leads to the covered front porch overlooking Columbia Park. The perfect spot for enjoying your morning cup of coffee or watching the neighborhood in all it's liveliness. The first floor hosts a living room, family room (currently being used as a fifth bedroom), an office with kitchenette, a full bath, and an updated main kitchen. The kitchen features stainless steel appliances, granite countertops, tiled backsplash and leads to the basement area with washer and dryer hook-ups and ample room for storage. Ascending to the second level, you will find four generously sized bedrooms with an additional full bath. Just a few blocks to Central Square, with the Biotech Hub, MIT and Kendall all less than a mile away, this home is surely in one of the most convenient parts of Cambridge.



319 Washington Street Cambridge, MA

OFFERED AT \$1,275,000

www.319Washington.com

Property Details

Beds	4
Baths	2
Living	1,814 (includes 52 SF under 5ft wall)
Taxes	\$5,686 (does not include Residential Exemption)
Parking	4 off street spaces
Outdoor	Front porch
Year Built	1828
Roof	Asphalt Shingles
Siding	Clapboard
Heating	Hot Water Baseboard; Gas
Hot Water	Natural Gas; Tankless



Max Dublin

Exclusive Listing Agent

617.230.7615

Max.Dublin@GibsonSIR.com

MAXDUBLIN.COM



Katherine Tolman

617.599.4930

Katherine.Tolman@GibsonSIR.com

Gibson Sotheby's International Realty
1008 Massachusetts Avenue
Cambridge, MA 02138

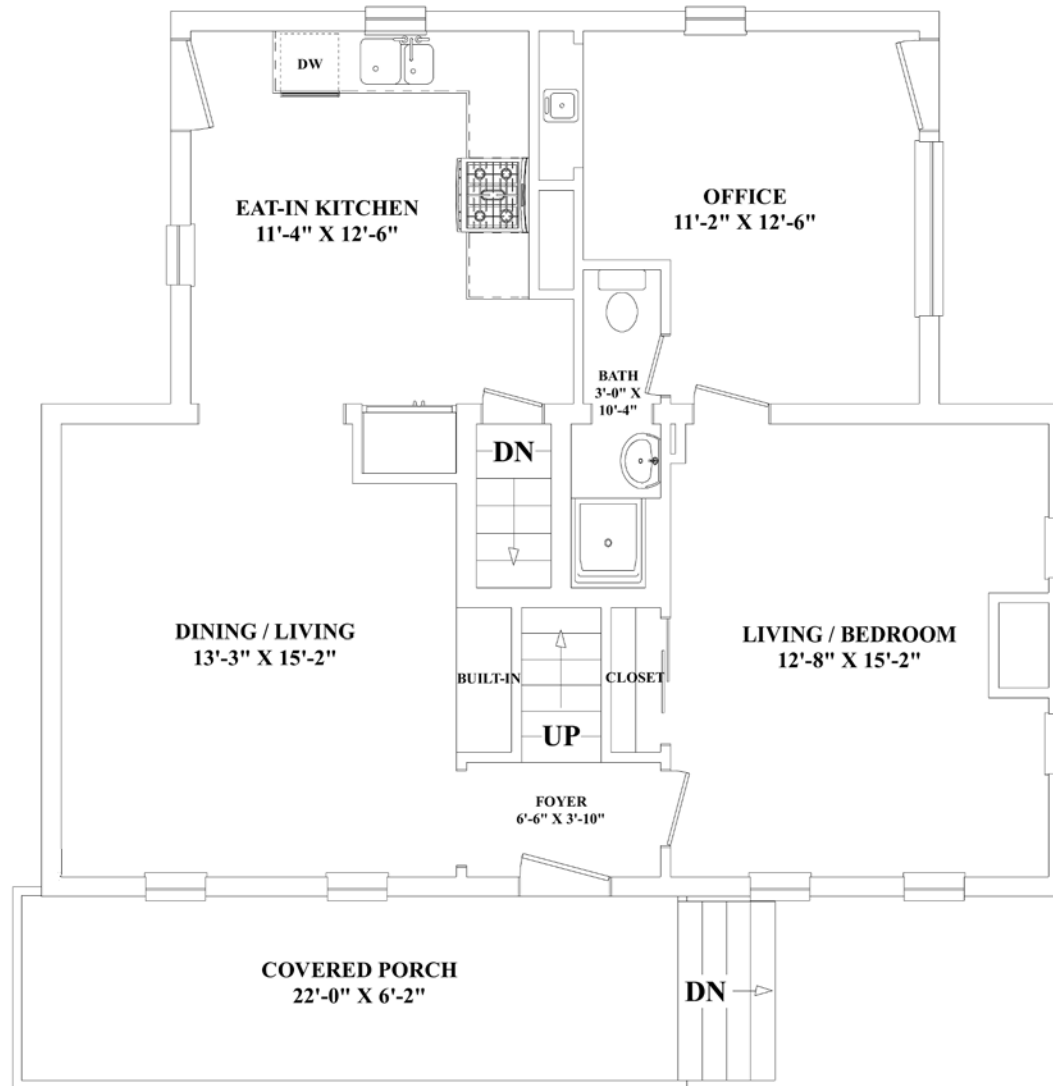
Max Dublin Team

Gibson
Sotheby's
INTERNATIONAL REALTY

Cooperating Broker Compensation is for MLS members only

Sotheby's International Realty® and the Sotheby's International Realty Logo are service marks licensed to Sotheby's International Realty Affiliates LLC and used with permission. Gibson Sotheby's International Realty fully supports the principles of the Fair Housing Act and the Equal Opportunity Act. Each office is independently owned and operated. Any services or products provided by independently owned and operated franchisees are not provided by, affiliated with or related to Sotheby's International Realty Affiliates LLC nor any of its affiliated companies. If your property is listed with a real estate broker, please disregard. It is not our intention to solicit the offerings of other real estate brokers.

319 Washington Street | First Floor

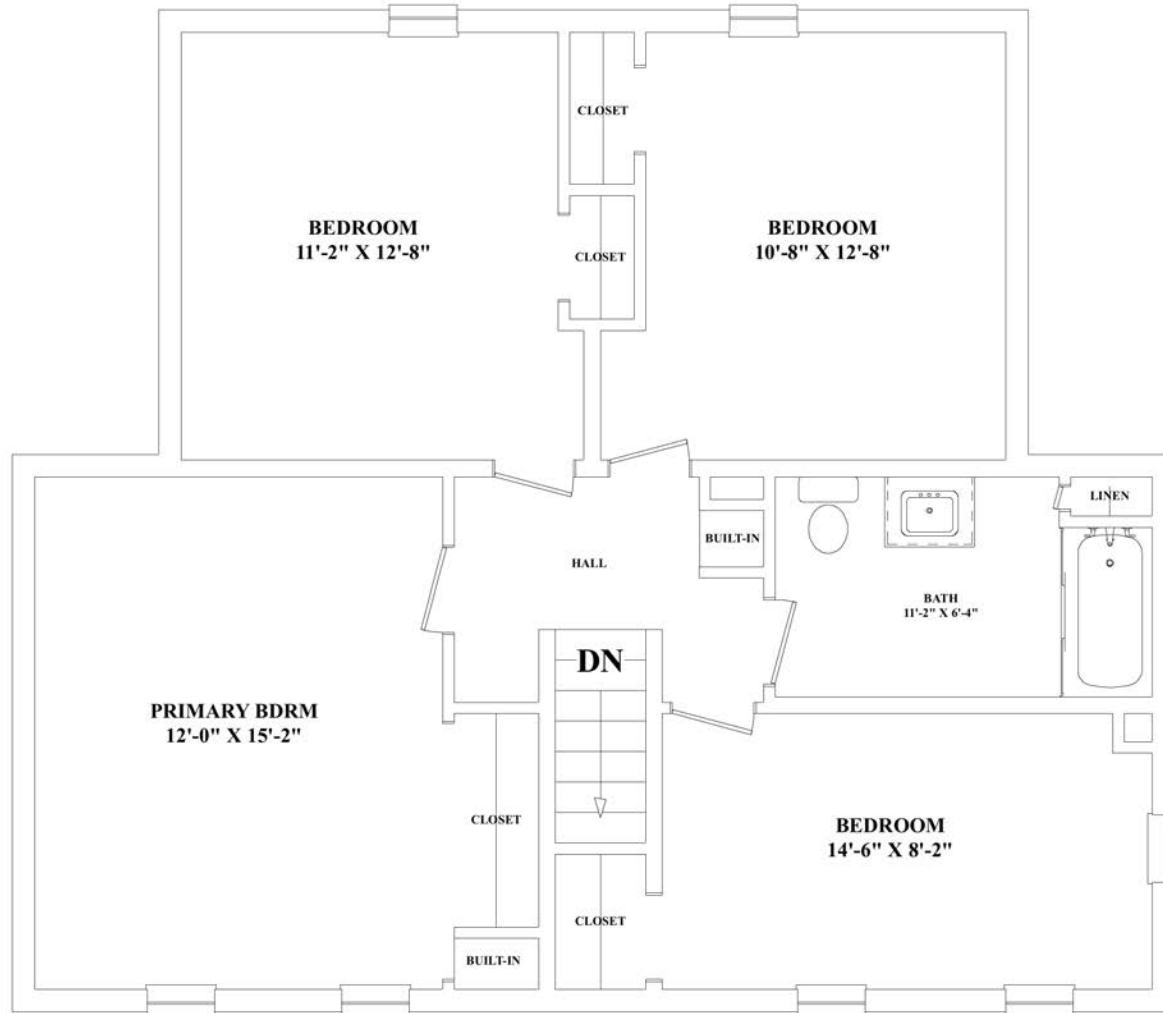


Max Dublin Team

Gibson

Sotheby's
INTERNATIONAL REALTY

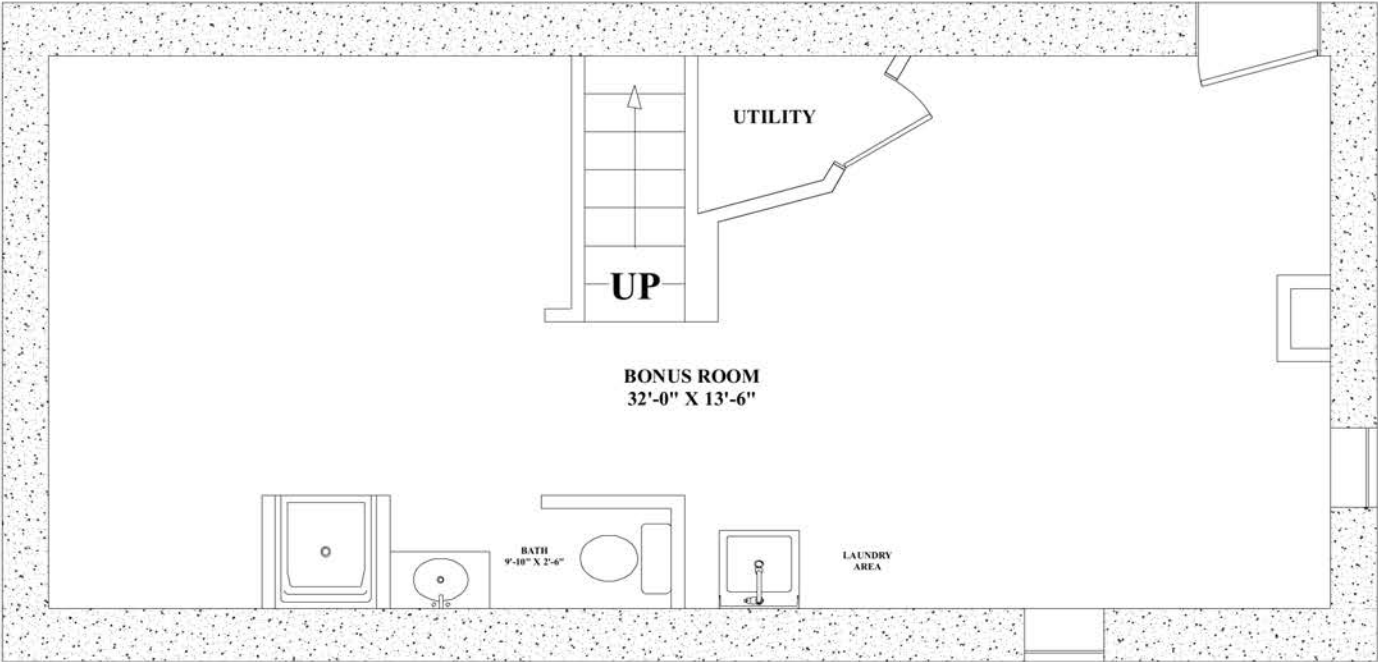
319 Washington Street | Second Floor



Max Dublin Team

Gibson
Sotheby's
INTERNATIONAL REALTY

319 Washington Street | Lower Level



Max Dublin Team

Gibson
Sotheby's
INTERNATIONAL REALTY
