



18-20 Lopez Street
Cambridge, MA 02139

Max Dublin Team

Gibson
Sotheby's
INTERNATIONAL REALTY



Light-colored wooden upper kitchen cabinets with silver knobs.

Black countertop with a white plastic egg carton and a black Ninja blender.

White built-in dishwasher with a control panel and a "CLEAN 120" sticker.

Two metal wire shelves mounted on the wall, holding various kitchen items like pots and containers.

White gas range with a wooden cutting board on top and a white pitcher on the counter to the left.

Double-hung window with white trim, looking out onto a green lawn and trees.

A white wire rack hanging on the wall between the two windows.

A wooden rolling cart with three shelves, holding a red vase, a black pan, and other kitchen items.

Large window with white trim, featuring a large green plant in a white pot in the foreground.

A blue recycling bin with a white label, located in the corner of the kitchen.



Cambridgeport Two-Family Home

This two-family home, right in the heart of Cambridgeport, has endless possibilities. The first floor provides three bed/one bath, plus an office and the second floor, two bed/two bath (one ensuite) bathed in plenty of light, includes pull-down access to the finished attic area that leads to a roof deck overlooking a canopy of trees and streetscape. This unit also has a back deck with stairs down to the backyard, which is a blank canvas ready for a garden, a play structure or whatever the vision. Both have private entrances and the unfinished basement has plenty of room for storage and utilities. Currently both units are tenanted through August 2022, there is solid rental history, so it's a great investment opportunity, but other uses could be as an owner occupied two-family with rental income or with just the right adjustments, it would make a wonderful single-family home. With easy access to the Central Square, MIT, plus the River and the multitude of parks/recreation spaces, make this an ideal property.

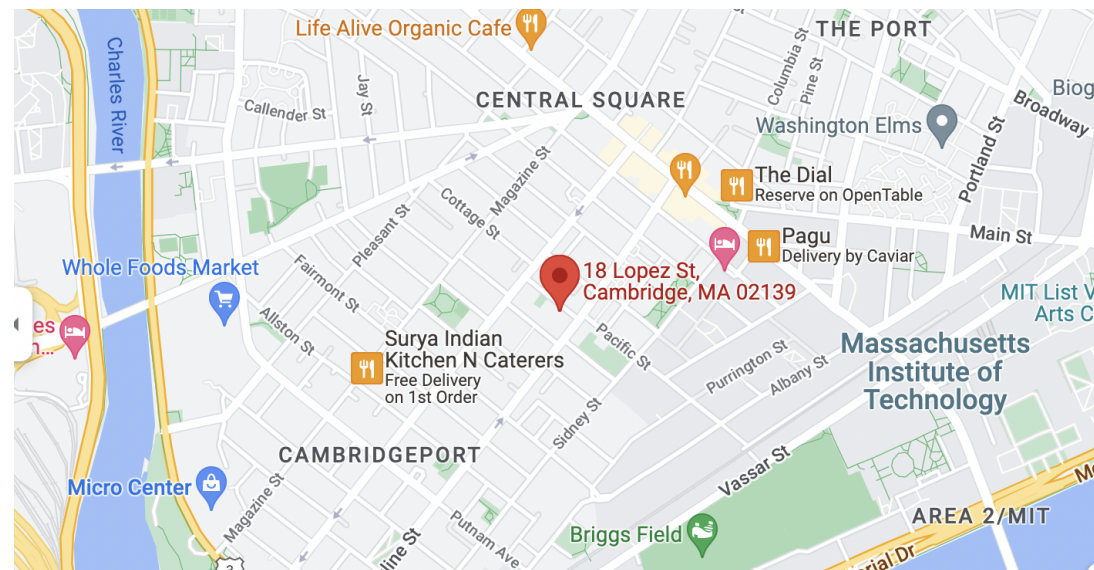
18-20 Lopez Street Cambridge, MA

OFFERED AT \$1,495,000

www.18Lopez.com

Property Details

Living Area	2,105 Sq. Ft. (Not including 375 Sq.Ft. of finished attic space)
Unit 1	3 Bedrooms 1 Full Bath
Unit 2	2 Bedrooms 2 Full Bath
Lot Size	2,500 Sq. Ft.
Taxes	\$7,506
Parking	On street permit
Outdoor	Fenced Backyard
Year Built	1886
Roof	Asphalt/Fiberglass Shingles
Siding	Aluminum Siding
Heating	Forced Air
Hot Water	Natural Gas



Max Dublin

Exclusive Listing Agent

617.230.7615

Max.Dublin@GibsonSIR.com

MAXDUBLIN.COM

Gibson Sotheby's International Realty
1008 Massachusetts Avenue
Cambridge, MA 02138

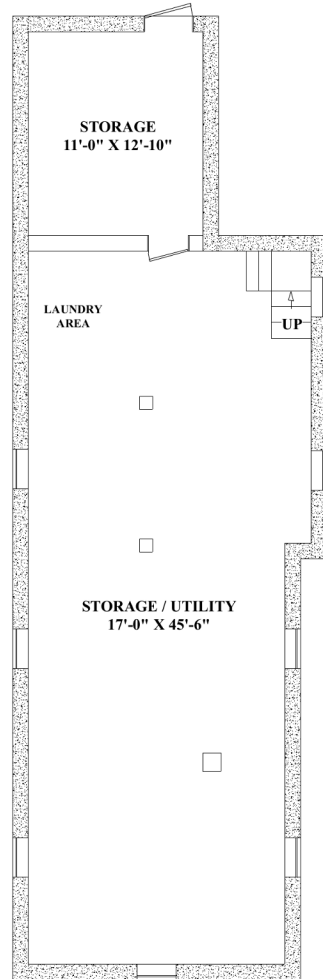
Cooperating Broker Compensation is for MLS members only

Sotheby's International Realty® and the Sotheby's International Realty Logo are service marks licensed to Sotheby's International Realty Affiliates LLC and used with permission. Gibson Sotheby's International Realty fully supports the principles of the Fair Housing Act and the Equal Opportunity Act. Each office is independently owned and operated. Any services or products provided by independently owned and operated franchisees are not provided by, affiliated with or related to Sotheby's International Realty Affiliates LLC nor any of its affiliated companies. If your property is listed with a real estate broker, please disregard. It is not our intention to solicit the offerings of other real estate brokers.

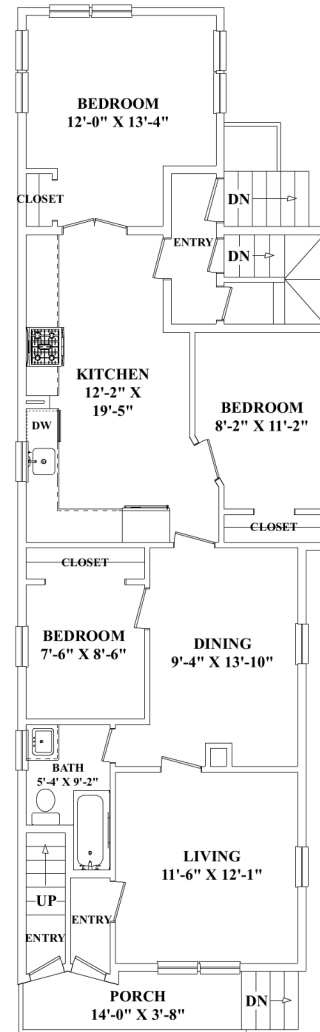
Max Dublin Team

Gibson
Sotheby's
INTERNATIONAL REALTY

18 Lopez Street



LOWER LEVEL

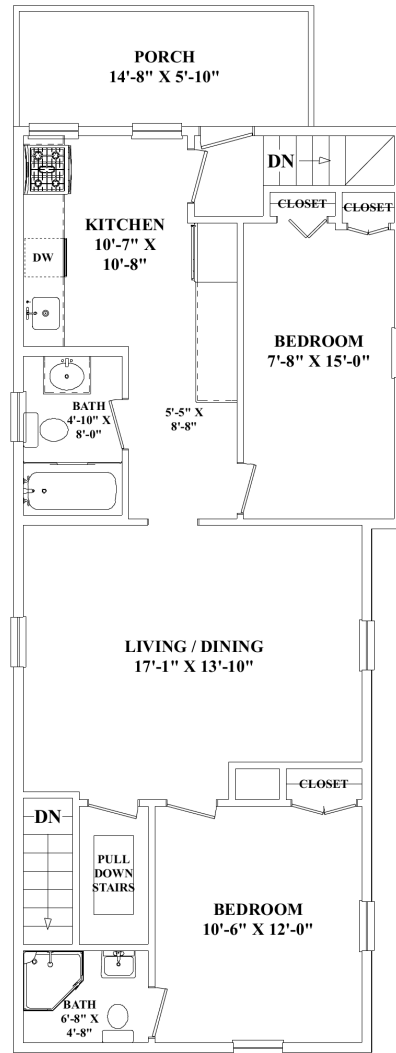


FIRST FLOOR

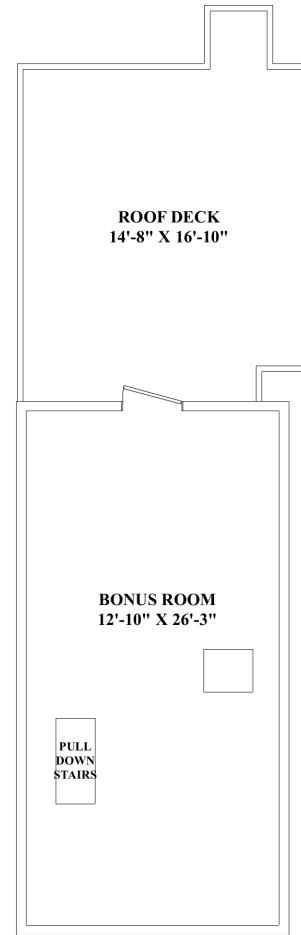
Max Dublin Team

Gibson
Sotheby's
INTERNATIONAL REALTY

18 Lopez Street



SECOND FLOOR



THIRD FLOOR

Max Dublin Team

Gibson
Sotheby's
INTERNATIONAL REALTY