



120 Pleasant Street, Unit 2  
Cambridge, MA 02139

Max Dublin Team

Gibson  
**Sotheby's**  
INTERNATIONAL REALTY





## Cheery Cambridgeport Condominium

This bright and cheery three-bedroom, two level condominium, offers a fantastic space to work, live and rest. The open living and dining room is an ideal space to entertain and features high ceilings, built in hutch and freshly refinished hardwood floors. The updated kitchen, a chef's delight, provides an abundance of counter space as well as a great flow and place to cook. Rounding out the main level is the sun-drenched primary bedroom with bay window, a full bathroom and a walk-in hall closet, currently used as a marvelous office nook. The lower-level presents two bedrooms, along with another full bath, and supplies a wonderful amount of additional light. Conveniently located in the heart of Cambridgeport - Alberico Park can be seen from the front porch - and Whole Foods Market, the Charles River, and Central Square T-Station are all within a half mile. All six units are owner-occupied and enjoy a large common backyard plus a flower-filled patio to grill and relax.

# 120 Pleasant Street, Unit 2 Cambridge, MA

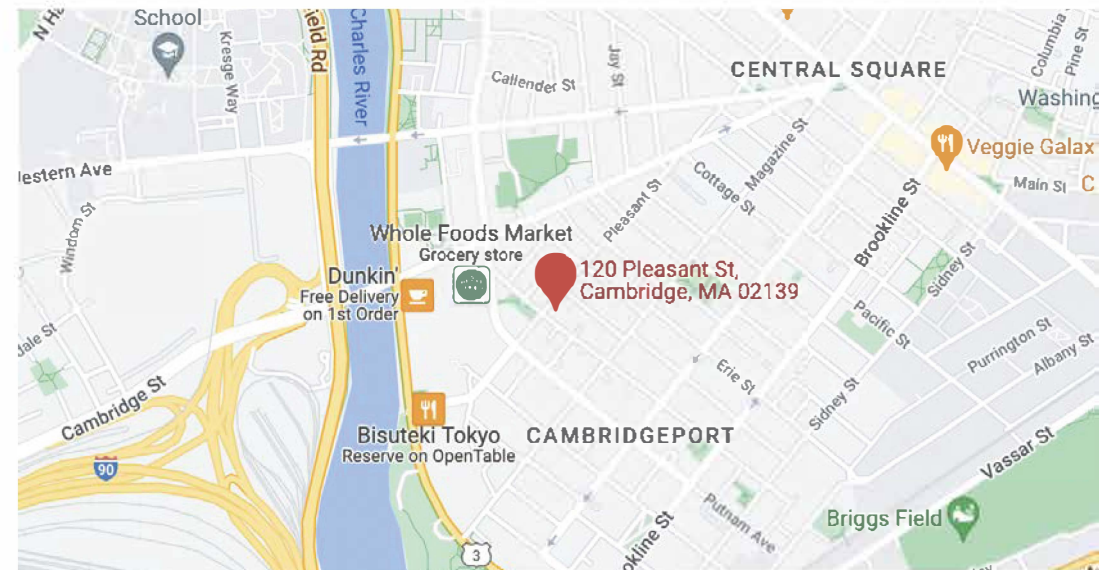
OFFERED AT \$998,000  
[www.120Pleasant.com](http://www.120Pleasant.com)

## Property Details

Condo Fee	\$550
Fee Includes	Heat; Hot Water; Gas; Water; Sewer; Master Insurance; Laundry Facilities; Exterior Maintenance; Landscaping; Reserve Funds; Common area maintenance and cleaning
Beds	3
Baths	2
Living	1,675 Sq. Ft.
Taxes (without exempt)	\$4,936
Taxes (with exempt)	\$2,235
Parking	On-Street Permit Parking
Outdoor	Common yard and patio
Year Built/Converted	1894 / 1974
Roof	Rubber
Siding	Vinyl
Heating	Hot Water Baseboard
Hot Water	Natural Gas



**Max Dublin**  
Exclusive Listing Agent  
617.230.7615  
[Max.Dublin@GibsonSIR.com](mailto:Max.Dublin@GibsonSIR.com)  
[MAXDUBLIN.COM](http://MAXDUBLIN.COM)



Gibson Sotheby's International Realty  
1008 Massachusetts Avenue  
Cambridge, MA 02138

Cooperating Broker Compensation is for MLS members only

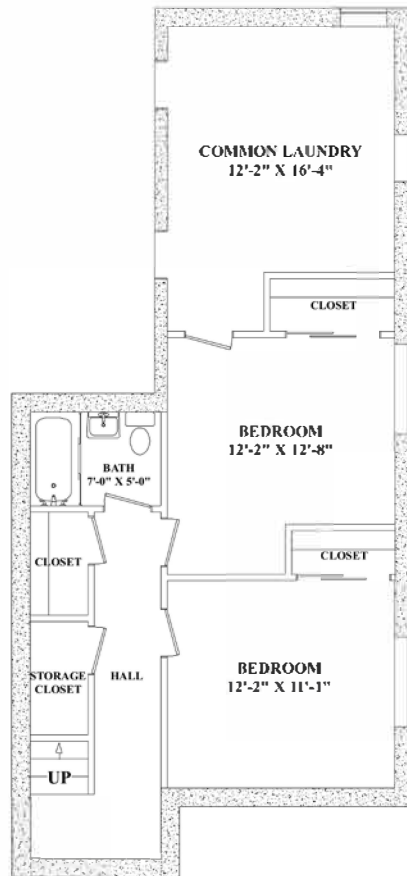
Sotheby's International Realty® and the Sotheby's International Realty Logo are service marks licensed to Sotheby's International Realty Affiliates LLC and used with permission. Gibson Sotheby's International Realty fully supports the principles of the Fair Housing Act and the Equal Opportunity Act. Each office is independently owned and operated. Any services or products provided by independently owned and operated franchisees are not provided by, affiliated with or related to Sotheby's International Realty Affiliates LLC nor any of its affiliated companies. If your property is listed with a real estate broker, please disregard. It is not our intention to solicit the offerings of other real estate brokers.

Max Dublin Team

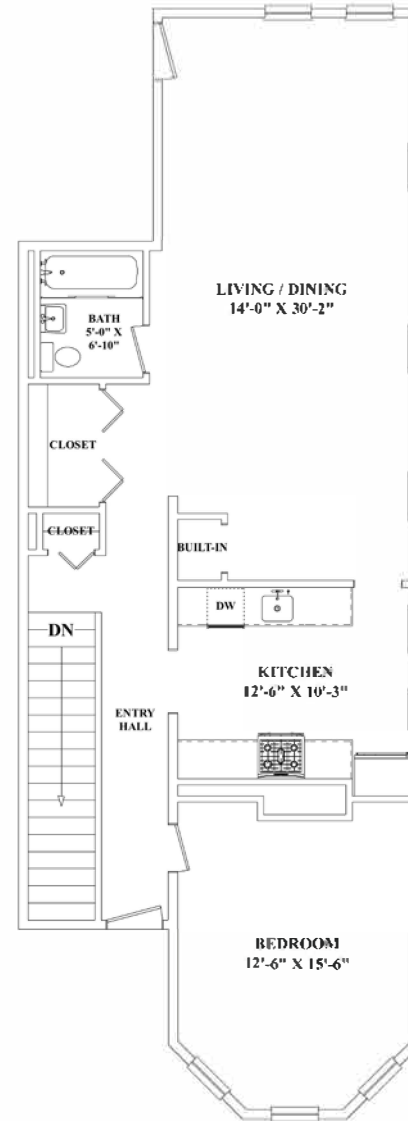
Gibson  
**Sotheby's**  
INTERNATIONAL REALTY

# 120 Pleasant Street, Unit 2

## LOWER LEVEL



## FIRST FLOOR



Max Dublin Team

Gibson

**Sotheby's**  
INTERNATIONAL REALTY