



200 Crosby Street  
Arlington, MA 02474

Max Dublin Team

Gibson  
Sotheby's  
INTERNATIONAL REALTY



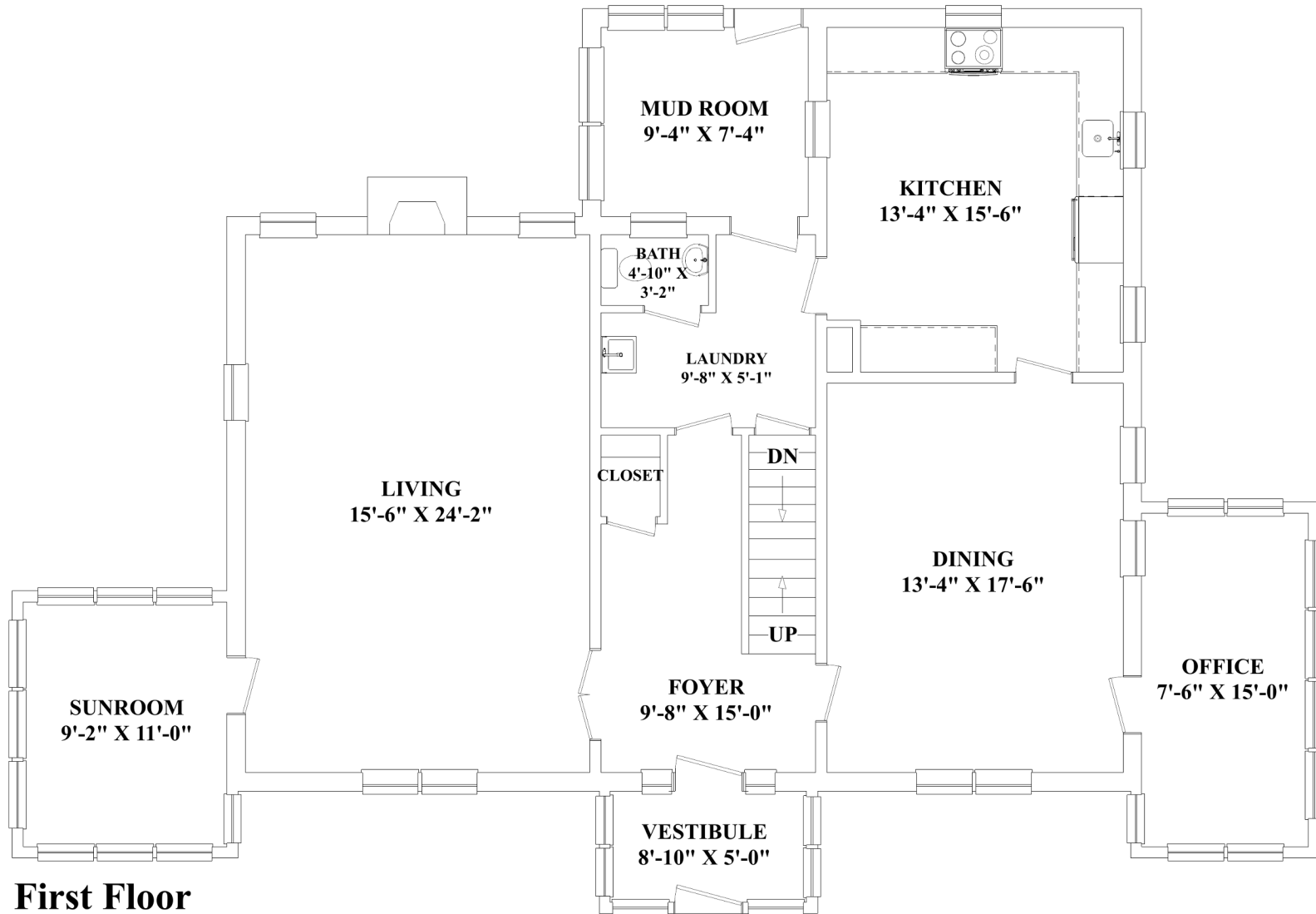


## Grand Morningside Colonial

This grand center entrance Colonial, situated in desirable Morningside, awaits its second act. Built in 1924, the home has a gracious and welcoming feel. The living room features high beamed ceilings, wainscoting and a brick fireplace. The dining room also boasts wood-paneled chair rail, beamed ceilings and decorative windows. Flanking both sides of the house are two heated sunrooms with floor-to-ceiling French doors that bring the outside in. With a large eat-in kitchen and comfortable flow it's easy to imagine hosting grand events. The second floor has four bright corner bedrooms, a spacious hallway, full bath and built-in linen cabinets. The third floor offers two more bedrooms and a full bath with a claw-footed tub. The impressive backyard includes an older outbuilding, formerly a summer kitchen that offers potential for expansive outdoor living, studio space, home gym, or office. Located a few blocks to the Mystic Lakes, close to the Bishop Elementary and Winchester Country Club.



# 200 Crosby Street



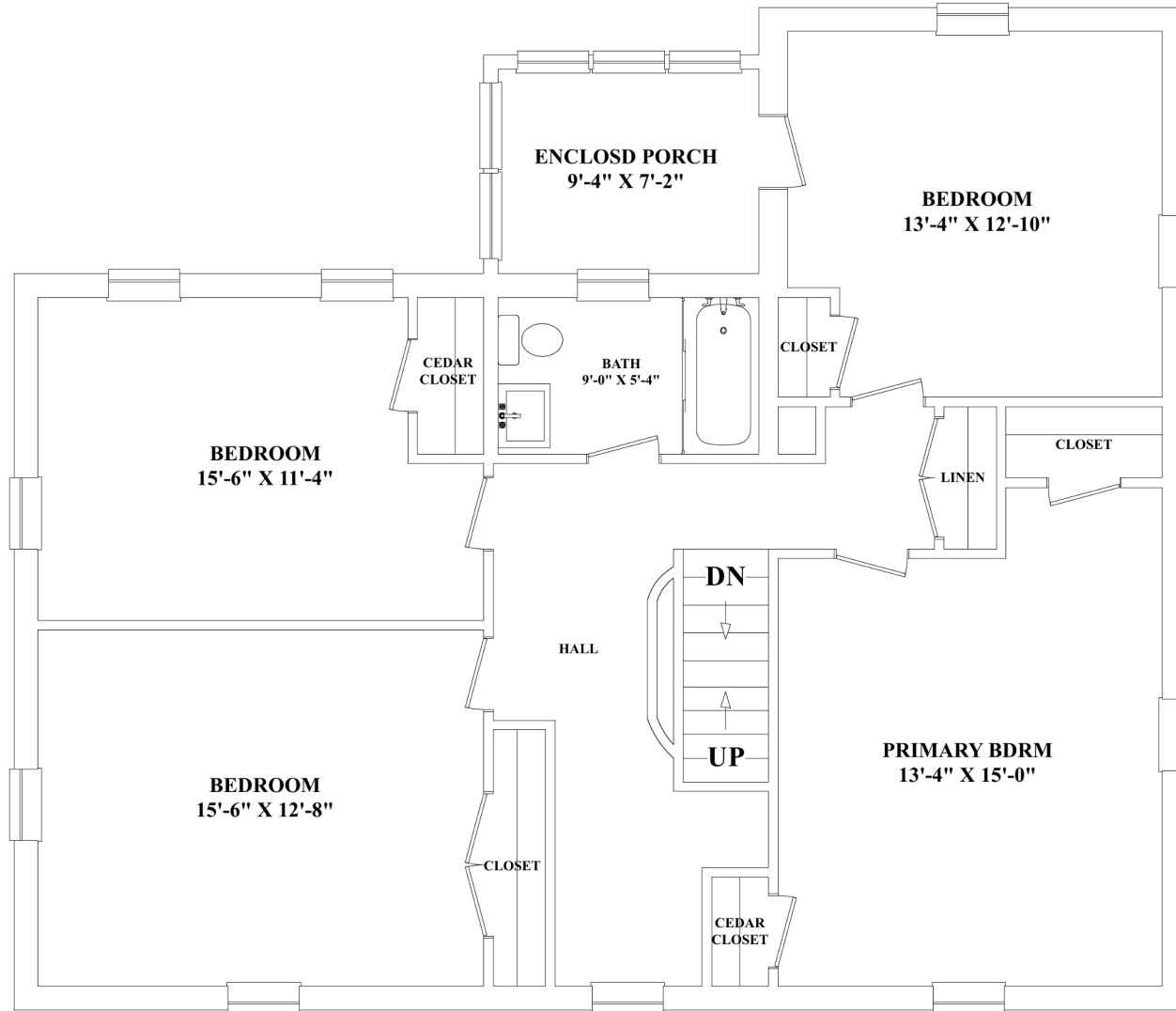
**First Floor**

Max Dublin Team

Gibson

**Sotheby's**  
INTERNATIONAL REALTY

# 200 Crosby Street



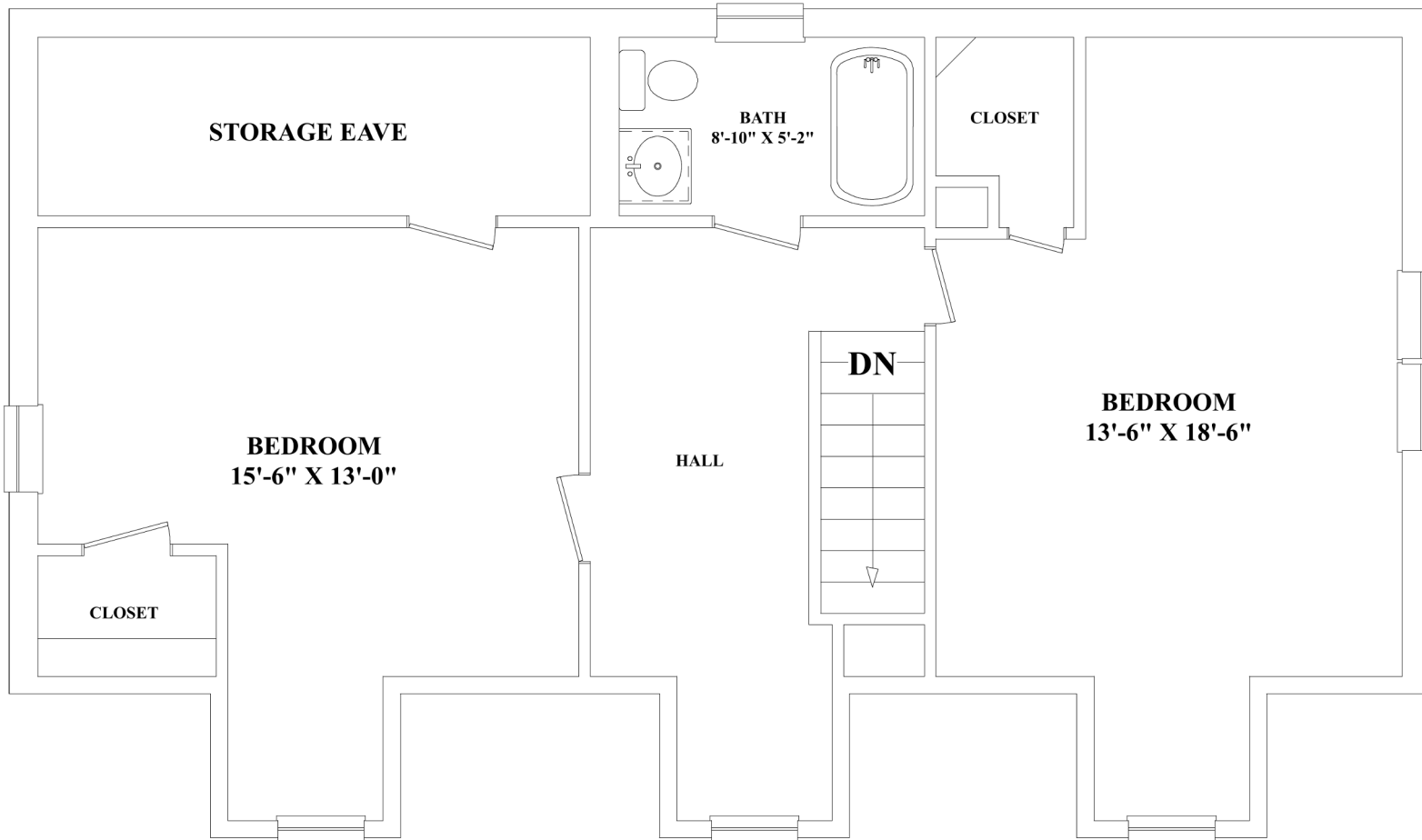
**Second Floor**

Max Dublin Team

Gibson

**Sotheby's**  
INTERNATIONAL REALTY

# 200 Crosby Street



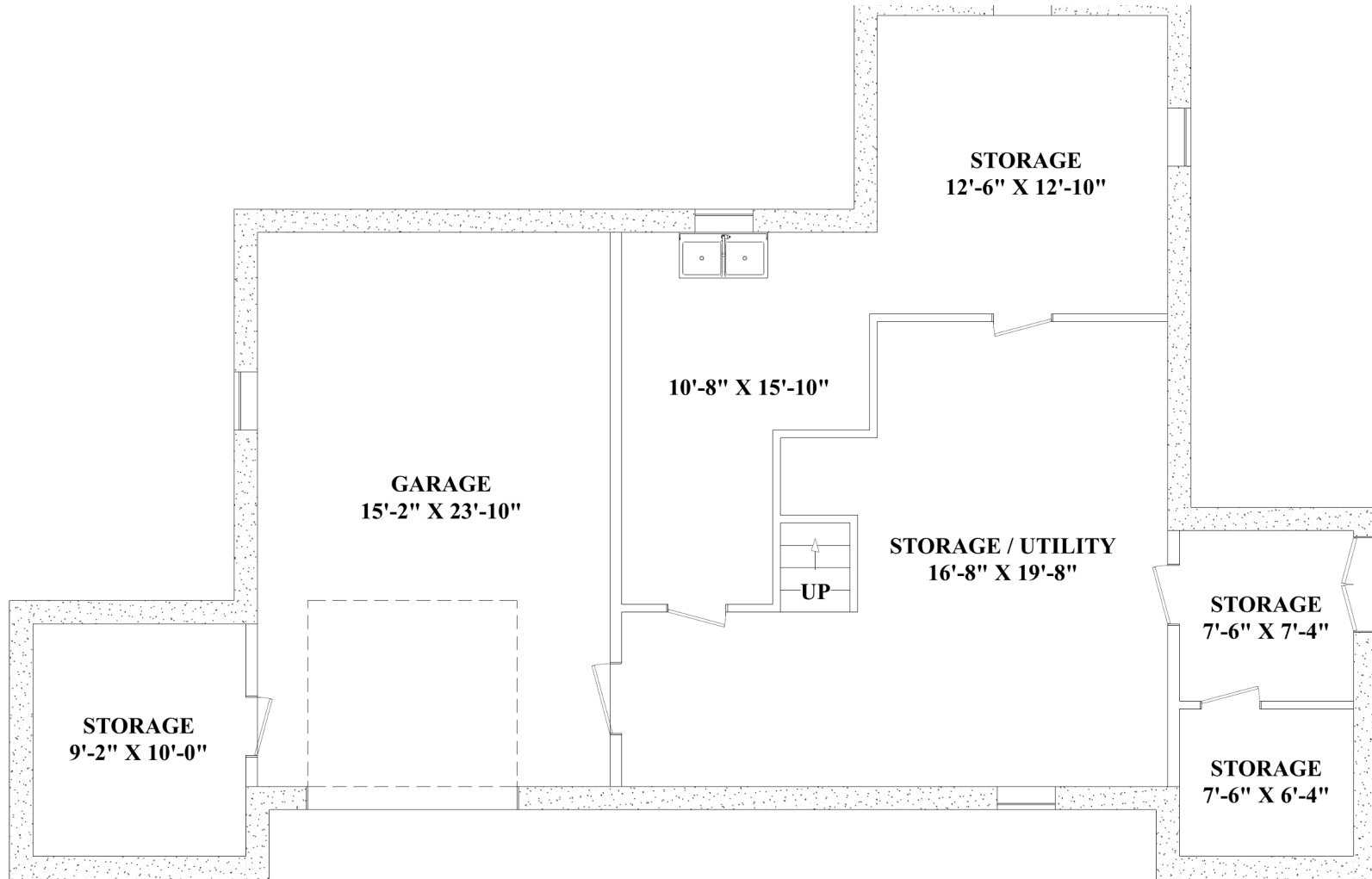
## Third Floor

Max Dublin Team

Gibson

**Sotheby's**  
INTERNATIONAL REALTY

# 200 Crosby Street



**Lower Level**

Max Dublin Team

Gibson

**Sotheby's**  
INTERNATIONAL REALTY

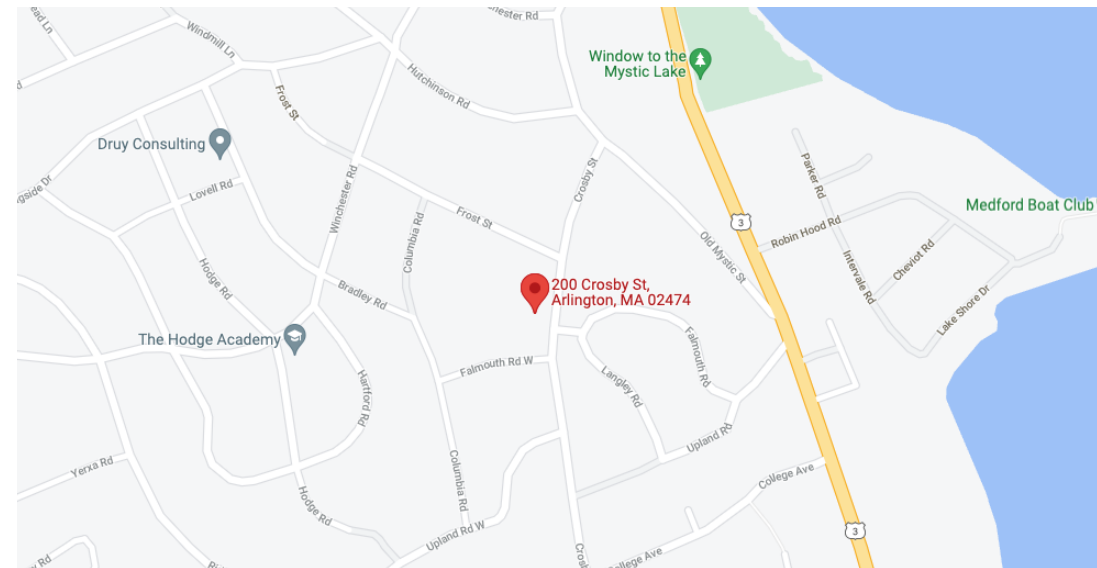
# 200 Crosby Street Arlington, MA

OFFERED AT \$1,100,000

[www.200Crosby.com](http://www.200Crosby.com)

## Property Details

<b>Beds</b>	6
<b>Baths</b>	2 Full / 1 Half
<b>Living</b>	3,437 Sq. Ft.
<b>Lot Size</b>	8,834 Sq. Ft.
<b>Taxes</b>	\$11,539
<b>Parking</b>	1 Car Garage
<b>Outdoor</b>	Large Backyard with Outbuilding
<b>Year Built</b>	1924
<b>Roof</b>	Asphalt Shingles
<b>Siding</b>	Brick
<b>Heating</b>	Steam (Oil)



**Max Dublin**  
Exclusive Listing Agent  
617.230.7615  
[Max.Dublin@GibsonSIR.com](mailto:Max.Dublin@GibsonSIR.com)  
[MAXDUBLIN.COM](http://MAXDUBLIN.COM)

Gibson Sotheby's International Realty  
1008 Massachusetts Avenue  
Cambridge, MA 02138

Cooperating Broker Compensation is for MLS members only

Sotheby's International Realty® and the Sotheby's International Realty Logo are service marks licensed to Sotheby's International Realty Affiliates LLC and used with permission. Gibson Sotheby's International Realty fully supports the principles of the Fair Housing Act and the Equal Opportunity Act. Each office is independently owned and operated. Any services or products provided by independently owned and operated franchisees are not provided by, affiliated with or related to Sotheby's International Realty Affiliates LLC nor any of its affiliated companies. If your property is listed with a real estate broker, please disregard. It is not our intention to solicit the offerings of other real estate brokers.

Max Dublin Team

Gibson  
**Sotheby's**  
INTERNATIONAL REALTY