



128 SCHOOL STREET
Belmont, Massachusetts

Max Dublin Team

Gibson
Sotheby's
INTERNATIONAL REALTY





Striking Property Awaiting its Second Act

Located at the corner of School and Oak Streets is the Elmer and Carrie Fletcher House. This grand home, built in the late 19th century in a subdivision known as Belmont Park, was noted at the time as “one of the prettiest” in the neighborhood by the Watertown Enterprise. Featuring an eclectic blend of architectural influences including Colonial Revival, Queen Anne and Shingle Styles, this striking property awaits its second act. A covered front porch and large foyer with a richly ornamented staircase provide a welcoming entrance. Well-preserved period details throughout, include oversized windows, pocket doors, a fireplace with a mirrored mantel, wood paneled wainscoting and hardwood floors. With over 3,500 square feet of living space on three floors, plus a two-story carriage house/garage 128 School Street offers lots of space and interesting possibilities. Convenient to Belmont Center’s charming shops and restaurants; and just 2 miles to Alewife T-Station and Fresh Pond in Cambridge.

128 School Street

Belmont, Massachusetts

OFFERED AT \$1,395,000

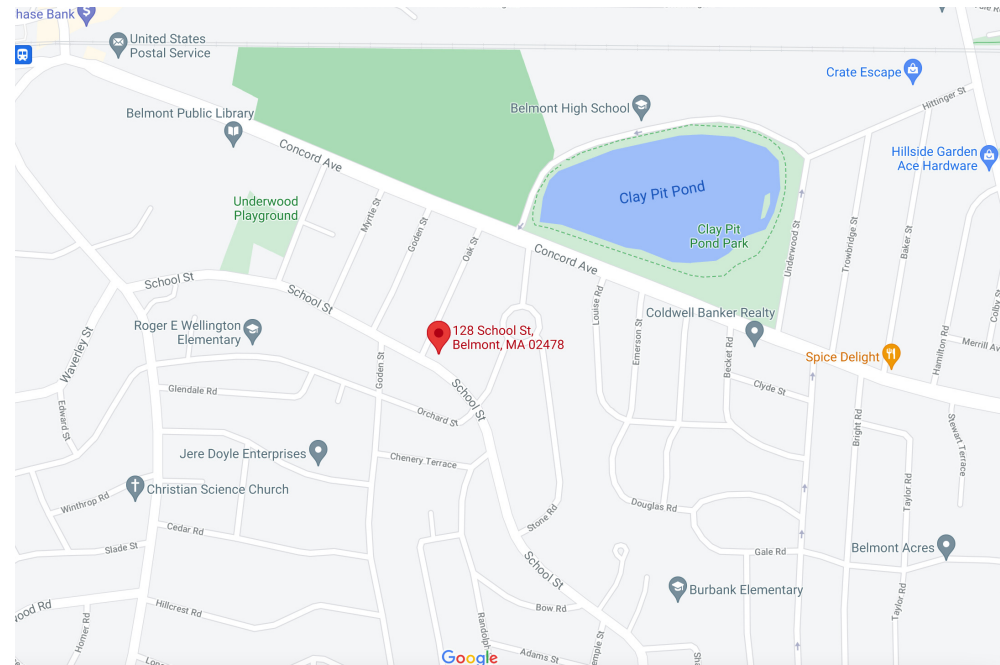
www.128SchoolSt.com

Property Details:

- Beds: 7
- Baths: 1 Full 2 Half
- Living: 3,679 Sq. Ft.
- Lot Size: 9,459 Sq. Ft.
- Taxes: \$14,817
- Parking: 2 Car Garage, Detached,
2 Car Off-Street Additional
- Outdoor: Porch, Deck, and Corner Lot
- Year Built: 1911
- Siding: Wood / Shingles
- Heating: Forced Hot Water (Gas)



MAX DUBLIN
Exclusive Listing Agent
617.230.7615
Max.Dublin@SothebysRealty.com



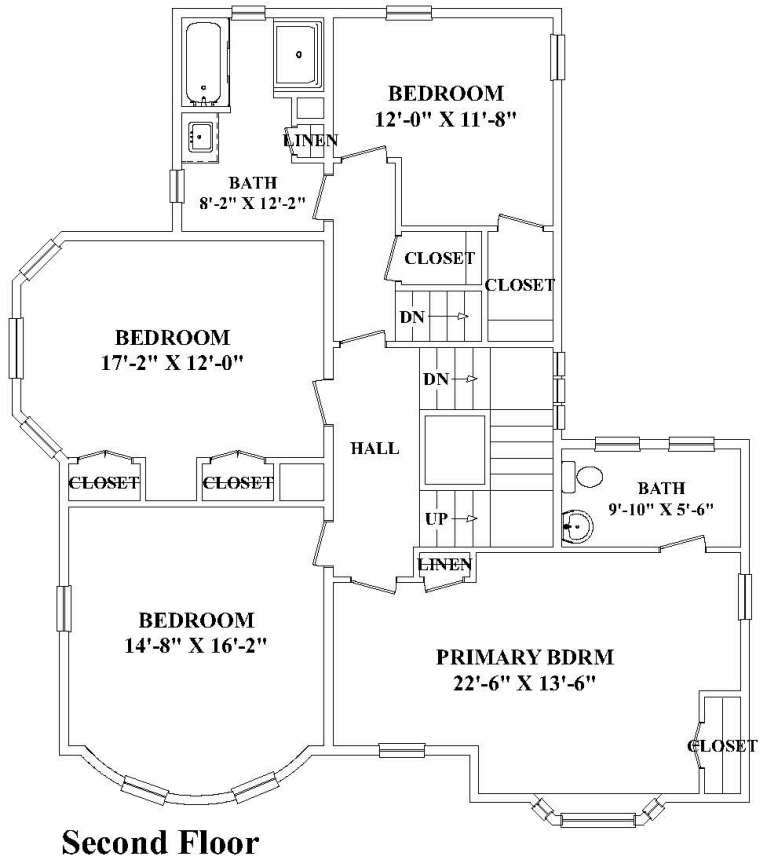
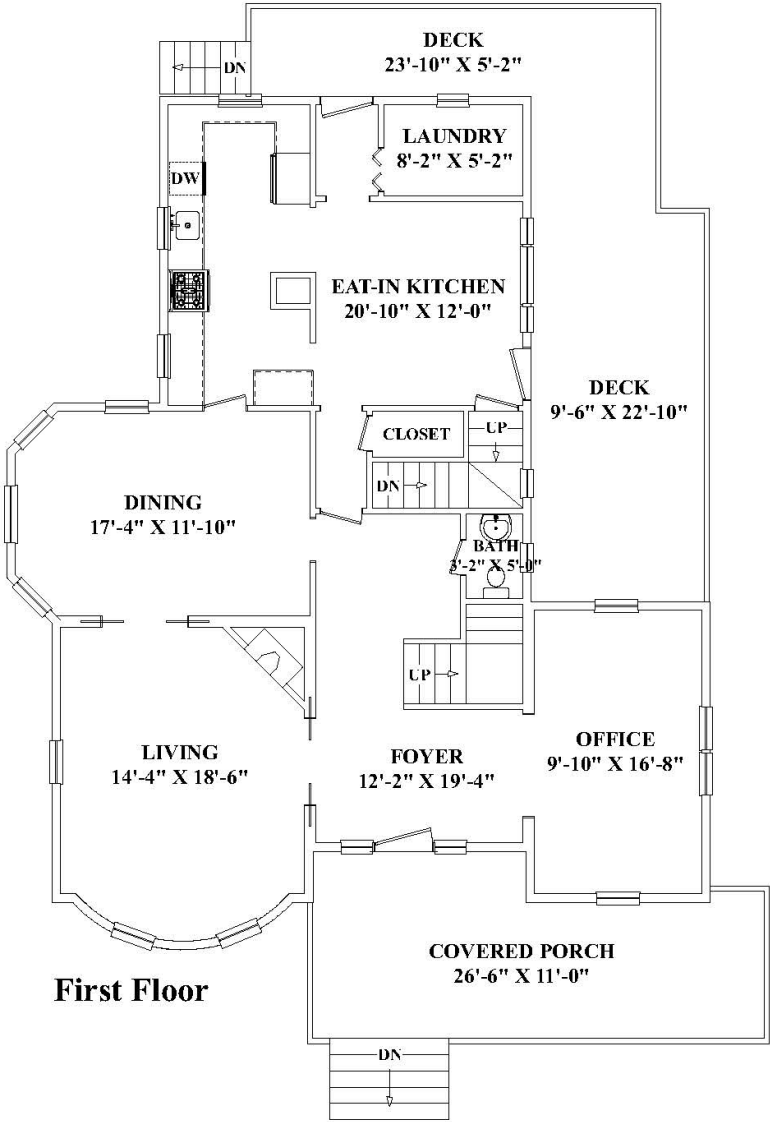
Gibson Sotheby's International Realty
1008 Massachusetts Avenue
Cambridge, MA 02138

www.MAXDUBLIN.COM

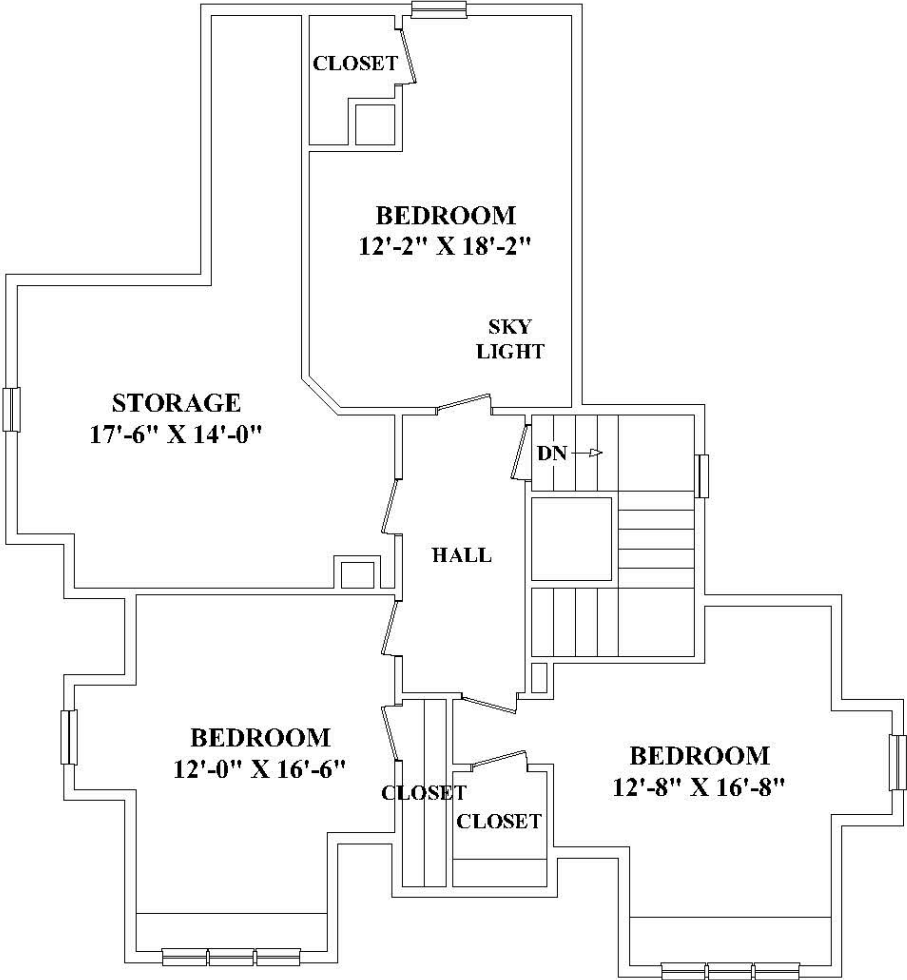
Max Dublin Team

Gibson
Sotheby's
INTERNATIONAL REALTY

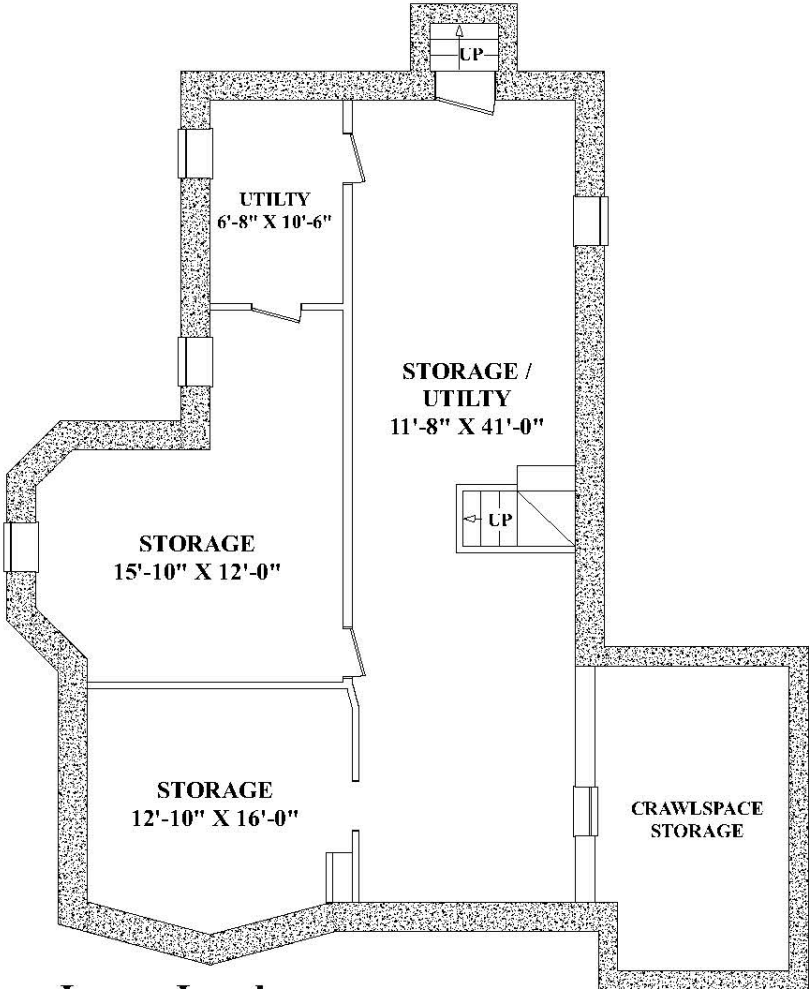
128 School Street



128 School Street



Third Floor



Lower Level