



66 Elizabeth Road  
Belmont, Massachusetts

Max Dublin Team

Gibson  
**Sotheby's**  
INTERNATIONAL REALTY









### *Light-Filled Colonial Home*

This gracious and light-filled Colonial is located in one of Belmont's most desirable neighborhoods. There are classic details throughout, like the inviting foyer with French doors leading to the dining room. A spacious front-to-back living room with crown molding, a large fireplace and sliding doors to the garden. Enjoy the eat-in kitchen or dine on the recently added covered porch with skylights. The lovely fenced-in backyard has a cottage-like feel with a patio, charming stone wall and perennial gardens. The heated sunroom and an office offer convenience for guests or working from home. The second floor has four good-sized bedrooms, including a large master bed and bathroom suite. There is also a walk-up attic with two skylights, which provides peeks of the Boston skyline and has been used as an artist studio in the past. The partially finished basement has a brick fireplace, a huge storage room and a separate laundry room. Convenient to Fresh Pond and just 3 miles to Harvard Square.



# 66 Elizabeth Road

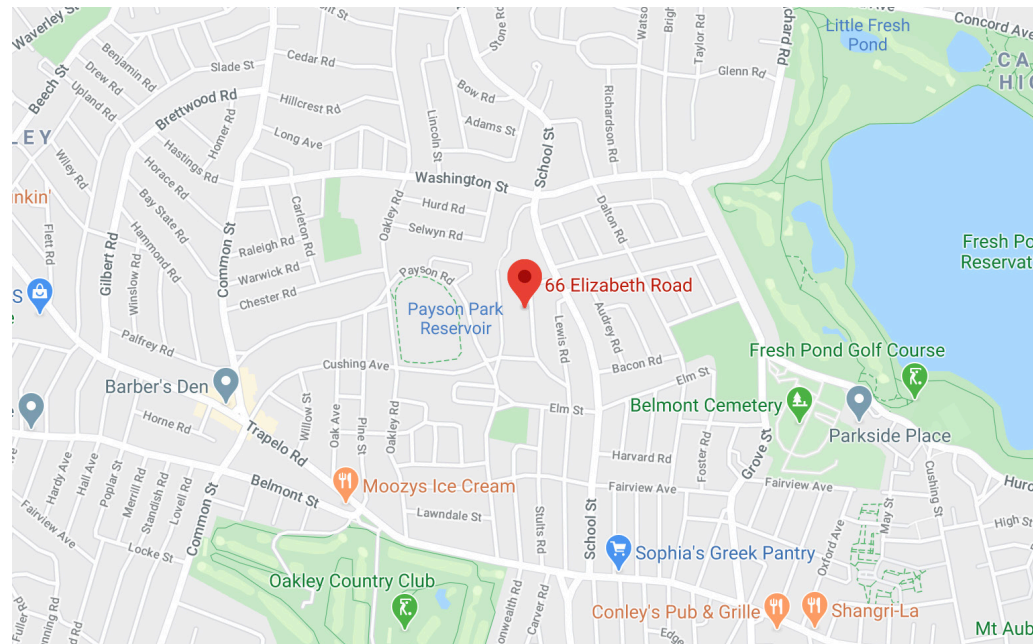
Belmont, Massachusetts

**OFFERED AT \$1,300,000**

[www.66Elizabeth.com](http://www.66Elizabeth.com)

## Property Details:

- Beds: 4
- Baths: 2 Full 1 Half Baths
- Sq. Ft.: 2,310 Sq. Ft.
- Taxes: \$14,443
- Parking: 2 Garage & 2 Off-Street
- Outdoor: Fenced-in backyard, patio, stone wall and perennial gardens
- Year Built: 1935
- Roof: Asphalt/Fiberglass Shingles
- Siding: Shingles, Wood
- Heating: Hot Water Radiators
- Cool Zones: Central Air
- Hot Water: Natural Gas



### ELIZABETH HAYES

Exclusive Listing Agent

508.725.4657

[Elizabeth.Hayes@SothebysRealty.com](mailto:Elizabeth.Hayes@SothebysRealty.com)

Gibson Sotheby's International Realty  
1008 Massachusetts Avenue  
Cambridge, MA 02138

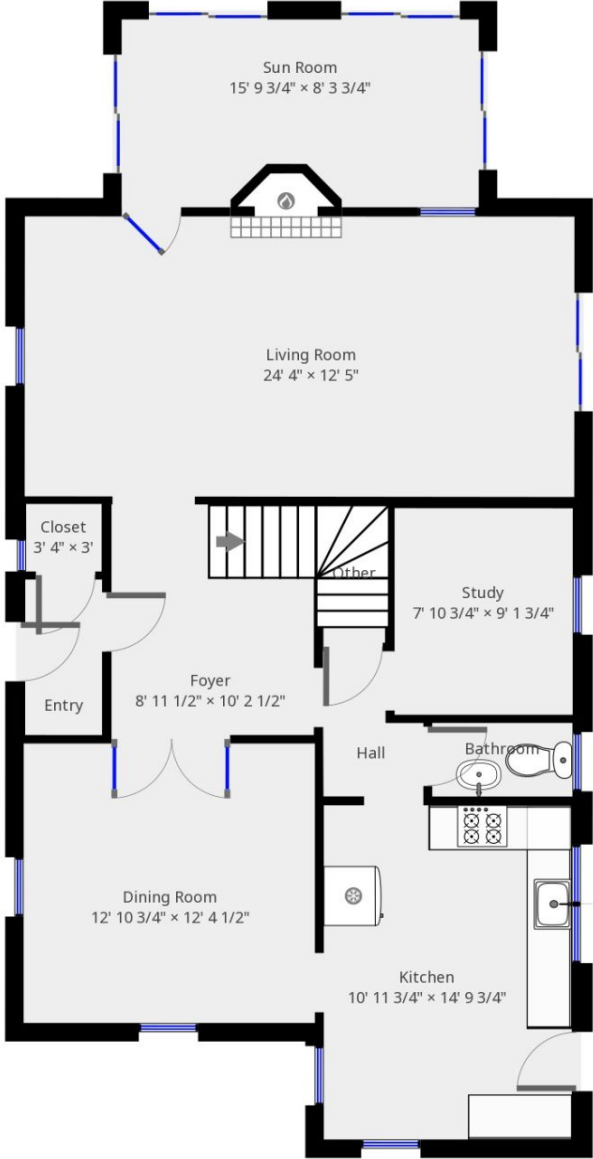
[WWW.MAXDUBLIN.COM](http://WWW.MAXDUBLIN.COM)

Max Dublin Team

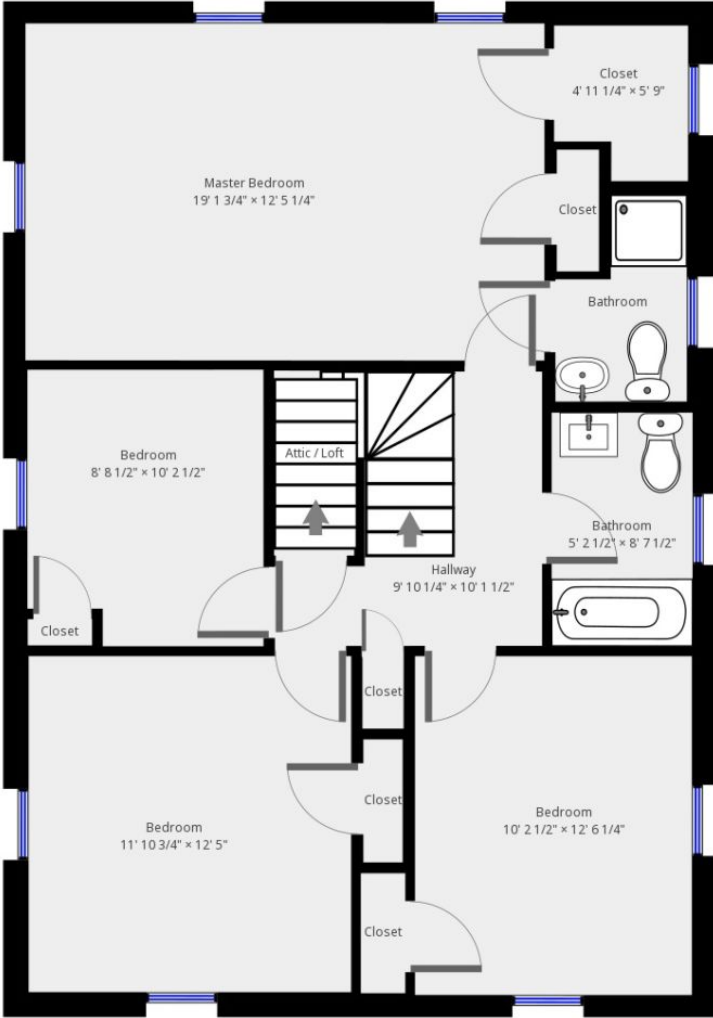
Gibson  
Sotheby's  
INTERNATIONAL REALTY

*Sotheby's International Realty and Sotheby's International Realty logo are registered (or unregistered) service marks used with permission. Sotheby's International Realty Affiliates LLC fully supports the principles of the Fair Housing Act and the Equal Opportunity Act. Each office is independently owned and operated. If your property is listed with a real estate broker, please disregard. It is not our intention to solicit the offerings of other real estate brokers. We are happy to work with them and cooperate fully.*

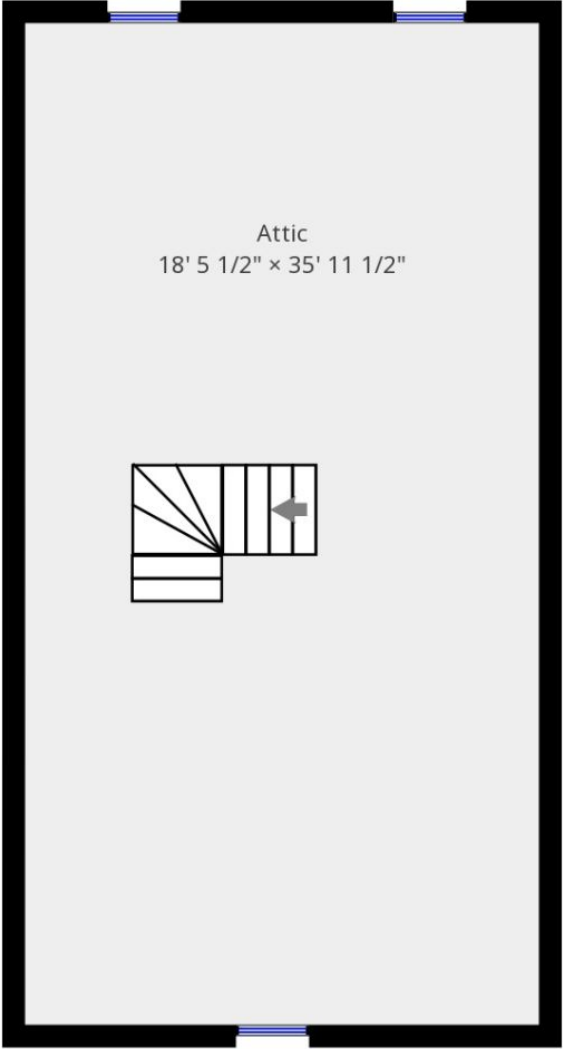
# 66 Elizabeth Road | First Floor



# 66 Elizabeth Road | Second Floor



# 66 Elizabeth Road | Third Floor



# 66 Elizabeth Road | Lower Level

