

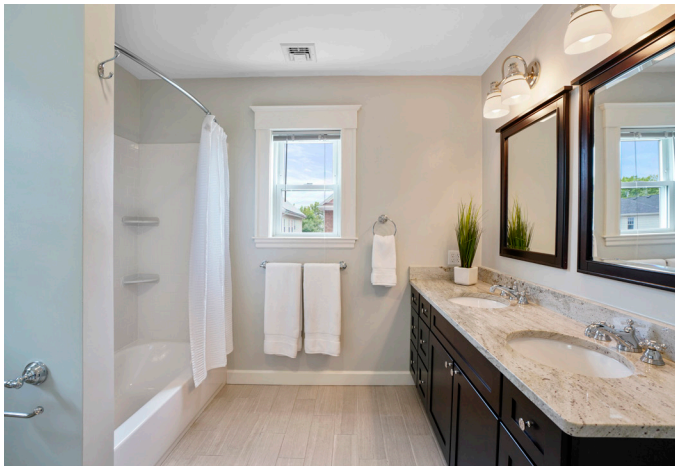


43 THORNDIKE STREET
Arlington, Massachusetts

Max Dublin Team

Gibson
Sotheby's
INTERNATIONAL REALTY





Delightful Single Family in One of Arlington's Most Desired Neighborhoods

A rare and sought-after opportunity, this delightful single-family in one of Arlington's most desired neighborhoods offers many wonderful qualities. Starting with an unbeatable location: 1/2 mile to the Alewife T stop, within blocks to Magnolia playground & park, the bike path, Mass Ave with all its unique establishments, and under 1.5 miles to Arlington center. Upon arriving to this lovely home, you are greeted by an inviting enclosed porch with a built-in bench and separate sunroom. Enter inside to feel the warmth of the light-filled open floor plan with hardwood floors, built-in hutch, and fabulous kitchen with island and exposed brick. A pantry with laundry, first floor BR/office and full bath complete this main floor. Upstairs you will find 3 ample size bedrooms & a full bath. Enjoy the bonus of a large finished family room plus tons of clean unfinished storage space in the basement. Finally, outside a great fenced-in backyard and parking for 1 car complete this special offering!

43 Thorndike Street

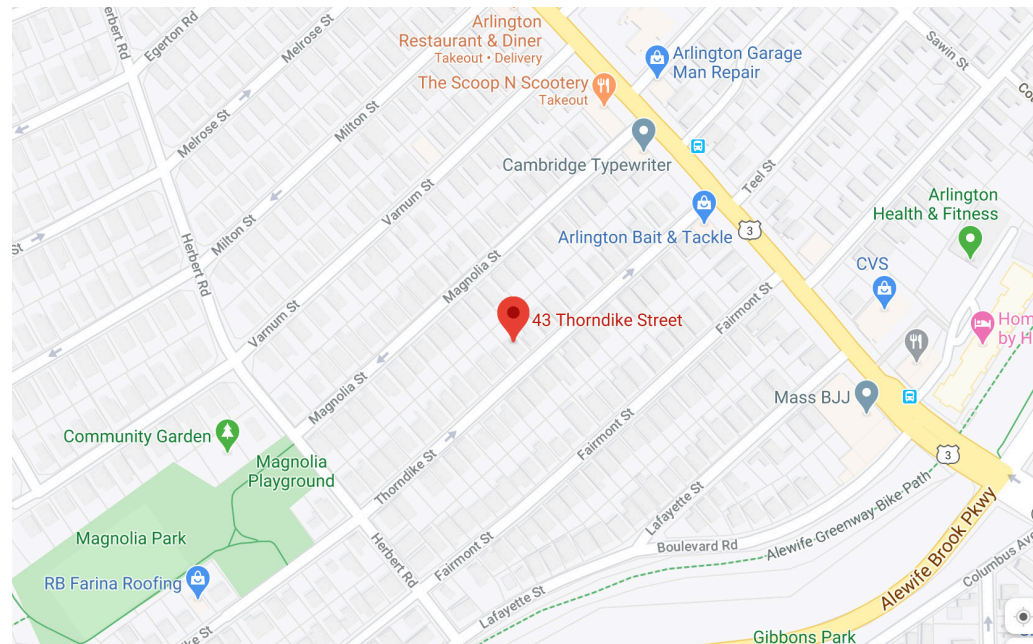
Arlington, Massachusetts

OFFERED AT \$1,095,000

www.43Thorndike.com

Property Details:

- Beds: 4
- Baths: 2 Full Baths
- Living: 1,817 Sq. Ft. (additional 410 sq.ft. of finished space in basement)
- Lot Size: 4,002 Sq. Ft.
- Taxes: \$8,792
- Parking: 1 Off-Street Parking
- Outdoors: Fenced Backyard
- Year Built: 1912
- Roof: Asphalt / Fiberglass Shingles (2013); Rubber
- Siding: Aluminum (painted 2013); Vinyl (2013)
- Heating: Forced Hot Air (2011)
- Cooling: Central (2011)
- Hot Water: Natural Gas (2019)



MAX DUBLIN

Exclusive Listing Agent

617.230.7615

Max.Dublin@SothebysRealty.com

Gibson Sotheby's International Realty
1008 Massachusetts Avenue
Cambridge, MA 02138

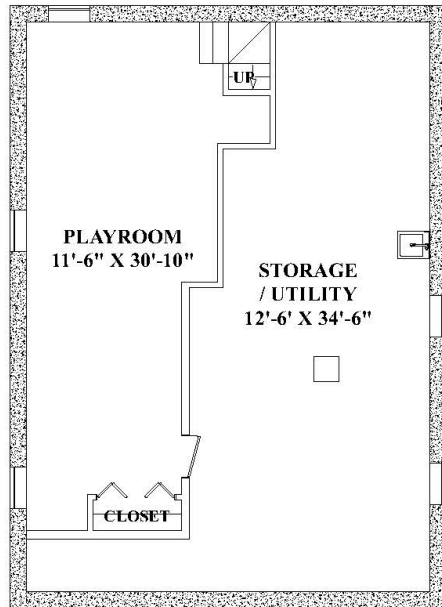
WWW.MAXDUBLIN.COM

Max Dublin Team

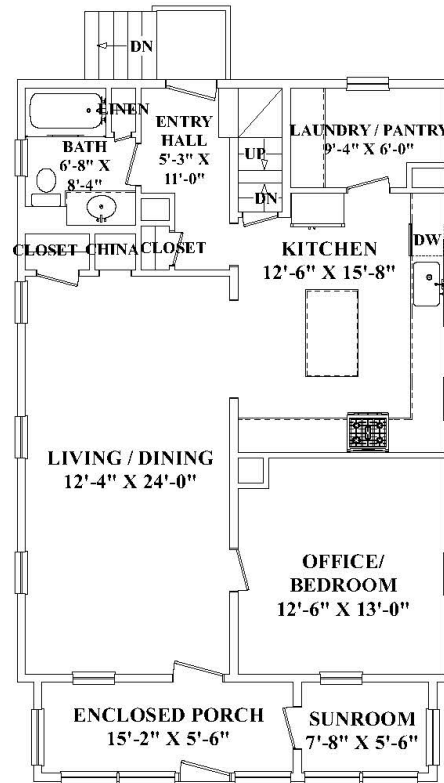
Gibson
Sotheby's
INTERNATIONAL REALTY

Sotheby's International Realty and Sotheby's International Realty logo are registered (or unregistered) service marks used with permission. Sotheby's International Realty Affiliates LLC fully supports the principles of the Fair Housing Act and the Equal Opportunity Act. Each office is independently owned and operated. If your property is listed with a real estate broker, please disregard. It is not our intention to solicit the offerings of other real estate brokers. We are happy to work with them and cooperate fully.

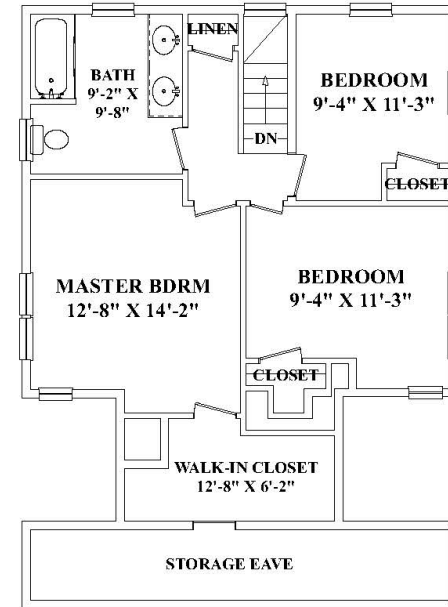
43 Thorndike Street, Arlington



Lower Level



First Floor



Second Floor

These plans are for marketing purposes only and to provide general information about 43 Thorndike St. Arlington, MA. Floor Plans and dimensions are approximate. Prepared for Max Dublin of Gibson Sotheby's International Realty in Cambridge, MA. Plans created by Dimensions New England. www.dimensionshomepage.com (978) 794-3993