



115 Highland Avenue, Unit 16
Somerville, MA 02143

Max Dublin Team

Gibson
Sotheby's
INTERNATIONAL REALTY





A Brilliant and Effortless Space

This Highland Avenue unit is settled amid the charming and magnetic neighborhoods of Winter Hill, Prospect Hill, and Spring Hill. With local dining favorites such as Sarma and Highland Kitchen waiting in close proximity, the unit inside reveals even more when walking into its brilliant airy space with hardwood throughout. The open concept of the living, dining and kitchen with breakfast bar allows for easy daily flow and effortless entertaining. Down the hall, the primary and guest bedrooms feature ample closets and treetop views of Somerville. A third bedroom could be used as an office or home gym. A full bath with tub is seamlessly accessible to guests and residents. Part of a mid-sized association with common heat, hot water, laundry, and a large patio perfect for hanging out with friends or an evening cocktail, with a unique feeling of retreat and refreshment. Private storage and two underground garage parking spots highlight the superb livability of 115 Highland Avenue.

115 Highland Avenue, Unit 16 Somerville, MA

OFFERED AT \$725,000

www.115HighlandAve.com

Property Details

Condo Fee	\$505.63
Fee Includes	Heat, Hot Water, Water, Sewer, Master Insurance, Laundry Facilities, Exterior Maintenance, Landscaping, Snow Removal, Extra Storage, Refuse Removal, Reserve Funds
Beds	3
Baths	1
Living	1,170
Taxes (without exempt)	\$6,214
Taxes (with exempt)	\$2,761 (Estimated)
Parking	2 Dedicated Spaces (#6 and #22)
Year/Built/Converted	1978 / 1982
Roof	Rubber
Siding	Brick
Heating	Hot Water Baseboard
Cooling	Wall AC
Hot Water	Central Hot Water



Max Dublin

Exclusive Listing Agent

617.230.7615

Max.Dublin@GibsonSIR.com

WWW.MAXDUBLIN.COM



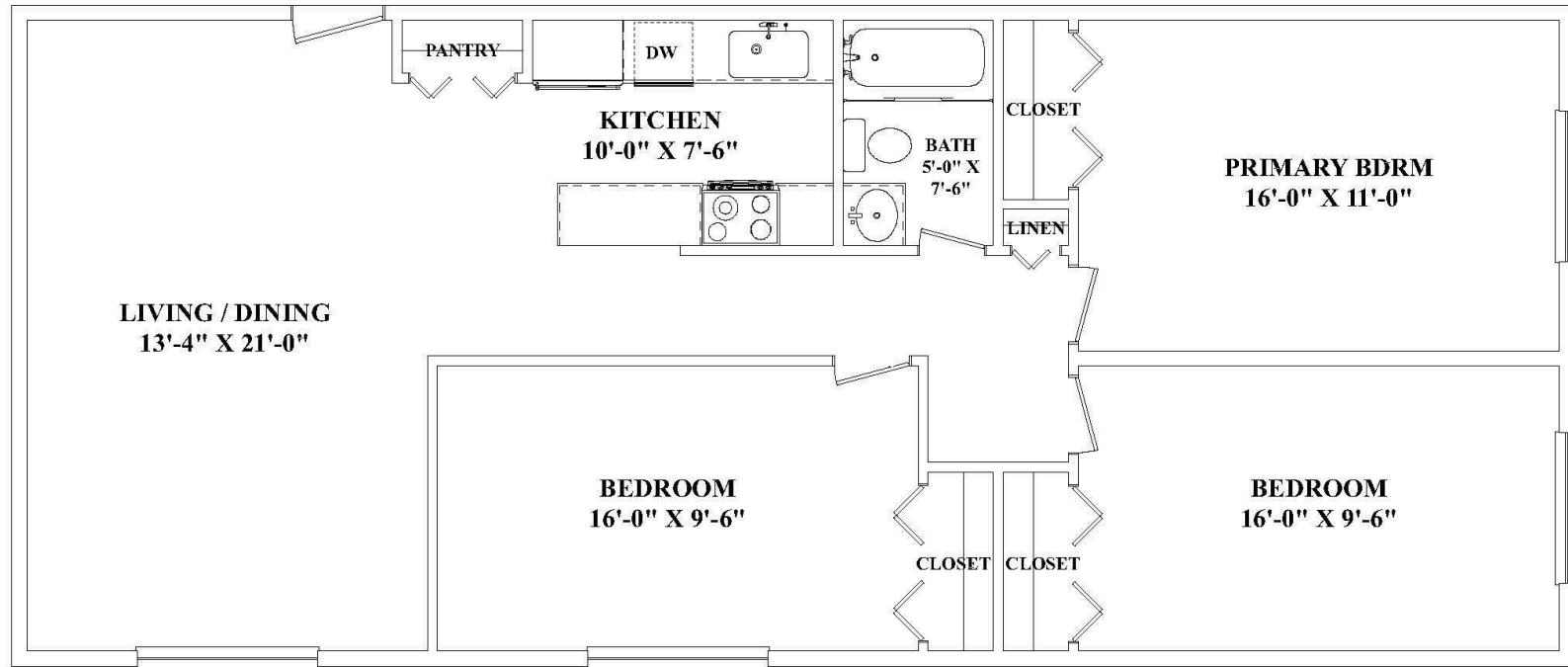
Gibson Sotheby's International Realty
1008 Massachusetts Avenue
Cambridge, MA 02138

Max Dublin Team

Gibson
Sotheby's
INTERNATIONAL REALTY

Sotheby's International Realty® and the Sotheby's International Realty Logo are service marks licensed to Sotheby's International Realty Affiliates LLC and used with permission. Gibson Sotheby's International Realty fully supports the principles of the Fair Housing Act and the Equal Opportunity Act. Each office is independently owned and operated. Any services or products provided by independently owned and operated franchisees are not provided by, affiliated with or related to Sotheby's International Realty Affiliates LLC nor any of its affiliated companies. If your property is listed with a real estate broker, please disregard. It is not our intention to solicit the offerings of other real estate brokers.

115 Highland Avenue, Unit 16



Unit 16

Max Dublin Team

Gibson
Sotheby's
INTERNATIONAL REALTY
